

Gear for SDW-T lamps

BSL 50 K307-TS 230/240V 50Hz BC1-118

CSLS electronic control unit with impregnated (HID 'BASIC') or encapsulated (HID 'Heavy Duty') electromagnetic ballasts

Warnings and Safety

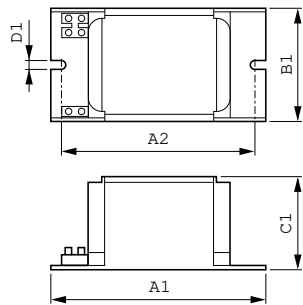
- Climatic suitability CSLS and HID BASIC: restricted to built in situations under normal conditions
- Climatic suitability CSLS and HID Heavy Duty: use in luminaires under humid conditions (not drip-proof)

Product data

| | | | | | |
|---------------------------------|--------------------------------------|--|--|--------------------------------------|--|
| Operating and Electrical | | Full product name | | BSL 50 K307-TS 230/240V 50Hz BC1-118 | |
| Input Voltage | 230 V (default) or 240 V | Full product code | | 872790094039800 | |
| Line Frequency | 50 Hz | Order code | | 913700281426 | |
| Input Frequency | 50 Hz | Material Nr. (12NC) | | 913700281426 | |
| | | Numerator - Quantity Per Pack | | 1 | |
| | | EAN/UPC - Product/Case | | 8727900940398 | |
| | | Numerator - Packs per outer box | | 6 | |
| | | EAN/UPC - Case | | 8727900940404 | |
| | | | | | |
| Wiring | | | | | |
| Connector Type | Screw | | | | |
| | | | | | |
| Approval and Application | | | | | |
| Approval Marks | CE marking ENEC certificate | | | | |
| | | | | | |
| Product Data | | | | | |
| Order product name | BSL 50 K307-TS 230/240V 50Hz BC1-118 | | | | |

Gear for SDW-T lamps

Dimensional drawing



| Product | D1 | C1 | A1 | A2 | B1 |
|------------------------------|--------|---------|----------|---------|---------|
| BSL 50 K307-TS 230/240V 50Hz | 6.2 mm | 52.0 mm | 118.0 mm | 94.0 mm | 61.0 mm |
| BC1-118 | | | | | |

