

HID-Basic BSN/BMH series multi-wattage for SON/CDO/CDM/MH/HPI

BSN 150/100 K407-TS 230/240V 50Hz

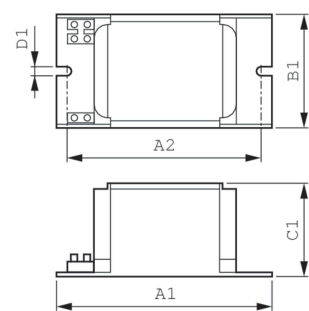
Impregnated electromagnetic copper/iron double-wattage ballasts for use with an external series (superimposed) ignitor for CDO, MH, HPI (Plus) and SON lamps

Product data

| | | | | |
|---------------------------------|-----------------------------------|--|--|-----------------------------------|
| Operating and Electrical | | Full product name | | BSN 150/100 K407-TS 230/240V 50Hz |
| Input Voltage | 230 V (default) or 240 V | Full product code | | 872790094068800 |
| Line Frequency | 50 Hz | Order code | | 913700286726 |
| Input Frequency | 50 Hz | Material Nr. (12NC) | | 913700286726 |
| | | Numerator - Quantity Per Pack | | 1 |
| | | EAN/UPC - Product/Case | | 8727900940688 |
| | | Numerator - Packs per outer box | | 6 |
| | | EAN/UPC - Case | | 8727900940695 |
| | | | | |
| Approval and Application | | | | |
| Approval Marks | CE marking ENEC certificate | | | |
| | | | | |
| Product Data | | | | |
| Order product name | BSN 150/100 K407-TS 230/240V 50Hz | | | |

HID-Basic BSN/BMH series multi-wattage for SON/CDO/CDM/MH/HPI

Dimensional drawing



| Product | D1 | C1 | A1 | A2 | B1 |
|--------------------------------------|--------|---------|----------|----------|---------|
| BSN 150/100 K407-TS 230/240V 50Hz | 6.3 mm | 65.0 mm | 134.0 mm | 113.0 mm | 76.0 mm |

