



# MultiOne Configurator

## MULTIONE INTERFACE USB2 DALI

Today's manufacturers are able to offer perfectly tailored lighting solutions that are intelligent and so can also be adapted to tomorrow's needs. Philips' new configurable gear units with built-in control functions allow programming of the luminaire's behavior in order to maximize energy savings and minimize environmental impact. Philips' light configurator is the single intuitive system allowing users to configure all the different functions in every programmable driver from Philips. Creating the perfect match for the application has never been easier.

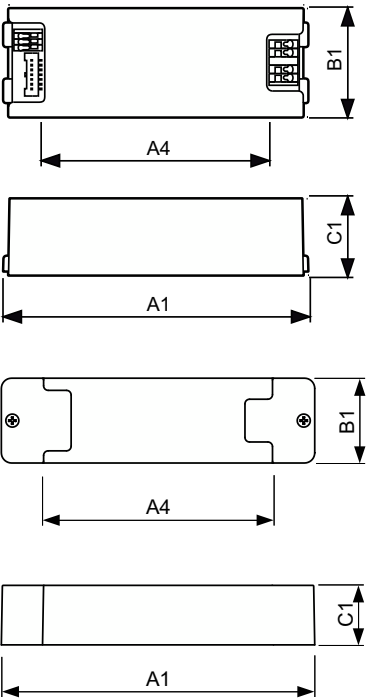
### Product data

Operating and Electrical	
Input Voltage	5 V
Wiring	
Connector Type Input Terminals	Mini USB (female)
Connector Type Output Terminals	WAGO 250 (2 connections in parallel)
Output Wire Cross Section (Max)	1.5 mm <sup>2</sup>
Output Wire Cross Section (Min)	0.2 mm <sup>2</sup>
Temperature	
Ambient temperature range	0 °C to 50 °C
T-Case Lifetime (Nom)	65 °C
T-Case Maximum (Max)	65 °C
Approval and Application	
Approval Marks	CE marking

Product Data	
Order product name	LCN8600/00 MultiOne interface USB2DALI
Full product name	MULTIONE INTERFACE USB2 DALI
Full product code	871829120946100
Order code	20946100
Material Nr. (12NC)	913700346703
Numerator - Quantity Per Pack	1
EAN/UPC - Product/Case	8718291209461
Numerator - Packs per outer box	1
EAN/UPC - Case	8718291209478

# MultiOne Configurator

## Dimensional drawing



Product	C1	A1	A4	B1
LCN8600/00 MultiOne interface USB2DALI	32 mm	170.0 mm	128 mm	46 mm

Product	C1	A1	A4	B1
LCN8600/00 MultiOne interface USB2DALI	32 mm	170.0 mm	128 mm	46 mm

