



OccuSwitch Wireless

LRH1765/00 IP65 Holder OS W C-C-W Sensor

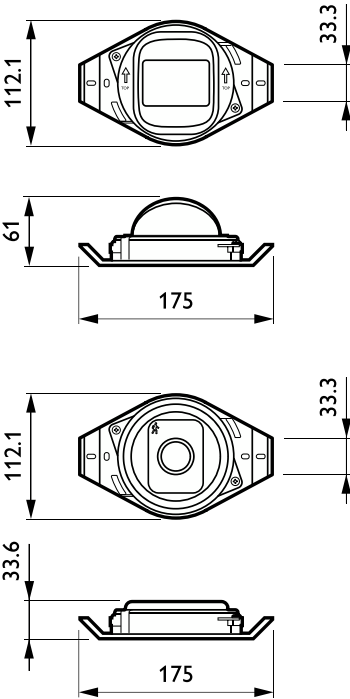
A wide range of wireless sensors with movement detection to control an area of 20-25 m2. Battery-operated, with a typical lifetime of 8-10 years. The actuator can switch any load up to 6 A and can be located in the ceiling or corridor. OccuSwitch Wireless will switch the lights off in a room or area when it is vacated and so save up to 30% on electricity. A detachable mains wiring connector enables easy installation. Separate Wieland and CEE cables are available for even easier, faster and trouble-free installation. Up to 10 sensors and/or actuators can be combined in one parallel network. The maximum distance between the sensor and actuator is 10 meters (depending on the application). With the extended scope of OccuSwitch Wireless functionality (increased number of sensors and interoperable with wireless ActiLume range), all wireless devices should be from the same version (LRM/LRA/LLC XXXX/10 or higher).

Product data

Product Data		Numerator - Quantity Per Pack	
Order product name	LRH1765/00 IP65 Holder OS W C-C-W Sensor	EAN/UPC - Product/Case	8718291748137
Full product name	LRH1765/00 IP65 Holder OS W C-C-W Sensor	Numerator - Packs per outer box	6
Full product code	871829174813700	EAN/UPC - Case	8718291748144
Order code	913700360103		
Material Nr. (12NC)	913700360103		
Local order code	LRH1765IP65H		

OccuSwitch Wireless

Dimensional drawing



Product
LRH1765/00 IP65 Holder OS W C-C-W Sensor

