

# HF-Matchbox Red

## HF-M RED 124 SH TL/TL5/PL-L 230-240V

HF-Matchbox Red is an affordable, reliable, compact, lightweight and high-frequency ballast for use with system wattages below 25 W in combination with TL mini, TL-D, TL5 and TL5c, PL-T/C, and PL-L/S lamps. The HF-M Red range has a robust design, meets all relevant international safety and performance standards and has an energy efficiency index (CELMA EEI ) of A2.;The ballast is primarily designed for Indoor application. For outdoor application, the luminaire should be minimum Classland need to be sufficiently protected against water & dust. The installation should also be guard against any lightening surge or any other necessary electrical protection as deemed in such typical installation & application.

### Product data

General Information	
Lamp Type	TL/TL5/PL-L
Number of Lamps	1 piece/unit
Number of Products on MCB (16A Type B) (Nom)	48
Automatic Restart	Yes
Operating and Electrical	
Input Voltage	230 to 240 V
Input Frequency	50 to 60 Hz
Power Factor 100% Load (Nom)	0.61
Ignition Time (Max)	0.92 s
Mains Voltage Performance (AC)	-8%~+6%
Mains Voltage Safety (AC)	-10%~+10%
Power Losses (Nom)	2.9 W
Wiring	
Connector Type Input Terminals	Insert

Color Input Terminals	Red
Color Output Terminals	Grey
Connector Type Output Terminals	Insert
Cable Length From Device to Lamp	1.50 m
Cable Length Hot Wiring	0.30 m
Wire Striplength	8.0-9.0 mm
Input Terminal Cross Section	0.50-1.50 mm <sup>2</sup>
Output Terminal Cross Section	0.50-1.50 mm <sup>2</sup>

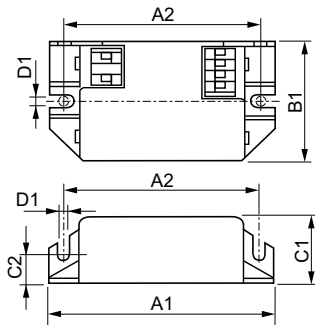
System characteristics	
Rated Ballast-Lamp Power	24 W
Rated Lamp Power on PL-L	24 W
System Power on PL-L	22.2 W
Lamp Power on PL-L	19.3 W
Power Loss on PL-L	2.9 W
Rated Lamp Power on TL5	24 W
System Power on TL5	22.7 W
Lamp Power on TL5	19.8 W

## HF-Matchbox Red

Power Loss on TL5	2.9 W
<b>Temperature</b>	
T-Ambient (Max)	40 °C
T-Ambient (Min)	-10 °C
T-Case Maximum (Max)	75 °C
<b>Mechanical and Housing</b>	
Housing	SH
<b>Emergency Operation</b>	
Battery Voltage Lamp Ignition	194-254 V
<b>Approval and Application</b>	
IP Classification	IP 20 [ Ingress Protection 20]

Approval Marks	F-Marking CE marking ENEC certificate CB Certificate
<b>Product Data</b>	
Full product code	871150091040030
Order product name	HF-M RED 124 SH TL/TL5/PL-L 230-240V
EAN/UPC - Product	8711500910400
Order code	913700420666
Numerator - Quantity Per Pack	1
Numerator - Packs per outer box	50
Material Nr. (12NC)	913700420666
Net Weight (Piece)	0.041 kg

### Dimensional drawing



HF-M RED 124 SH TL/TL5/PL-L 230-240V

Product	D1	C1	C2	A1	A2	B1
HF-M RED 124 SH	4.4 mm	22.0	10.0	94.0	70.0	40.0
TL/TL5/PL-L 230-240V		mm	mm	mm	mm	mm

