

HF-Matchbox Blue

HF-M BLUE 109 LH TL/PL-S 230-240V

Compact, lightweight, High Frequency electronic ballast for TL (4-18W), TL5 (14-28W) and compact fluorescent PL (5-24W) lamps

Product data

General Information	
Lamp Type	TL/PL-S
Number of Lamps	1 piece/unit
Number of Products on MCB (16A Type B) (Nom)	159
Automatic Restart	Yes
Operating and Electrical	
Input Voltage	230 to 240 V
Input Frequency	50 to 60 Hz
Power Factor 100% Load (Nom)	0.64
Ignition Time (Max)	0.5 s
Mains Voltage Performance (AC)	-8%+6%
Mains Voltage Safety (AC)	-10%+10%
Power Losses (Nom)	1.7 W
Wiring	
Connector Type Input Terminals	Insert
Color Input Terminals	Blue
Color Output Terminals	Grey
Connector Type Output Terminals	Insert
Cable Length From Device to Lamp	1.50 m
Cable Length Hot Wiring	0.30 m
Wire Striplength	8.0-9.0 mm
Input Terminal Cross Section	0.50-1.50 mm ²

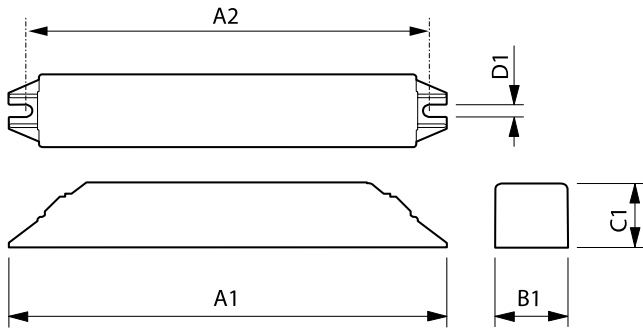
Output Terminal Cross Section	0.50-1.50 mm ²
System characteristics	
Rated Ballast-Lamp Power	9 W
System Power on PL-S	9.5 W
Rated Lamp Power on PL-S	9 W
Power Loss on PL-S	1.7 W
Lamp Power on PL-S	7.8 W
Lamp Power on TL	8.2 W
Rated Lamp Power on TL	9 W
System Power on TL	10.1 W
Temperature	
T-Ambient (Max)	40 °C
T-Ambient (Min)	-10 °C
T-Case Maximum (Max)	75 °C
Mechanical and Housing	
Housing	LH
Emergency Operation	
Battery Voltage Lamp Ignition	194-254 V
Approval and Application	
IP Classification	IP 20 [Ingress Protection 20]

HF-Matchbox Blue

Approval Marks	F-Marking CE marking VDE certificate CB Certificate
Product Data	
Full product code	871150053680830
Order product name	HF-M BLUE 109 LH TL/PL-S 230-240V
EAN/UPC - Product	8711500536808

Order code	53680830
Numerator - Quantity Per Pack	1
Numerator - Packs per outer box	50
Material Nr. (12NC)	913700421366
Net Weight (Piece)	0.036 kg

Dimensional drawing



HF-M BLUE 109 LH TL/PL-S 230-240V

Product	A1	A2	B1	C1	D1
HF-M BLUE 109 LH TL/PL-S 230-240V	144 mm	133 mm	22 mm	22 mm	4.2 mm

