

HF-Matchbox Blue

HF-M BLUE 114 LH TL/PL-S/PL-C 230-240V

Compact, lightweight, High Frequency electronic ballast for TL (4-18W), TL5 (14-28W) and compact fluorescent PL (5-24W) lamps

Product data

General Information	
Lamp Type	TL/PL-S/PL-C
Number of Lamps	1 piece/unit
Number of Products on MCB (16A Type B) (Nom)	101
Automatic Restart	Yes
Operating and Electrical	
Input Voltage	230 to 240 V
Input Frequency	50 to 60 Hz
Power Factor 100% Load (Nom)	0.64
Ignition Time (Max)	0.5 s
Mains Voltage Performance (AC)	-8%+6%
Mains Voltage Safety (AC)	-10%+10%
Power Losses (Nom)	2.9 W
Wiring	
Connector Type Input Terminals	Insert
Color Input Terminals	Grey
Color Output Terminals	Grey
Connector Type Output Terminals	Insert
Cable Length From Device to Lamp	1.50 m
Cable Length Hot Wiring	0.30 m
Wire Striplength	8.0-9.0 mm
Input Terminal Cross Section	0.50-1.50 mm ²

Output Terminal Cross Section	0.50-1.50 mm ²
System characteristics	
Rated Ballast-Lamp Power	14 W
System Power on PL-S	14.1 W
Rated Lamp Power on PL-S	14 W
Power Loss on PL-S	2.2 W
Lamp Power on PL-S	11.9 W
System Power on PL-C	14.6 W
Rated Lamp Power on PL-C	14 W
Power Loss on PL-C	2.4 W
Lamp Power on PL-C	12.2 W
Lamp Power on TL	11.8 W
Rated Lamp Power on TL	14 W
System Power on TL	15.7 W

Temperature	
T-Ambient (Max)	40 °C
T-Ambient (Min)	-10 °C
T-Case Maximum (Max)	75 °C

Mechanical and Housing	
Housing	LH

HF-Matchbox Blue

Emergency Operation

Battery Voltage Lamp Ignition 194-254 V

Approval and Application

IP Classification IP 20 [Ingress Protection 20]
Approval Marks F-Marking CE marking VDE certificate
CB Certificate

Product Data

Full product code 871150053682230

Order product name HF-M BLUE 114 LH TL/PL-S/PL-C
230-240V

EAN/UPC - Product 8711500536822

Order code 53682230

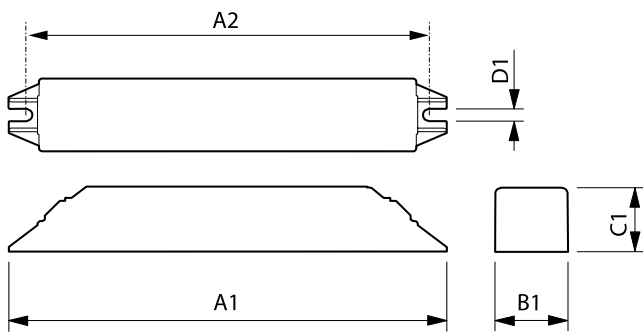
Numerator - Quantity Per Pack 1

Numerator - Packs per outer box 50

Material Nr. (12NC) 913700421766

Net Weight (Piece) 0.036 kg

Dimensional drawing



HF-M BLUE 114 LH TL/PL-S/PL-C 230-240V

Product	A1	A2	B1	C1	D1
HF-M BLUE 114 LH TL/PL-S/PL-C 230-240V	144 mm	133 mm	22 mm	22 mm	4.2 mm

