

HF-Matchbox Red

HF-M RED 109 SH TL/PL-S 230-240V

Compact, lightweight, High Frequency electronic ballast for TL (8-18W), TL5 (14-24W) and compact fluorescent PL (7-24W) lamps

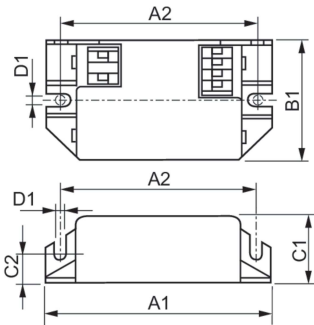
Product data

Operating and Electrical	
Input Voltage	230 to 240 V
Line Frequency	50 to 60 Hz
Input Frequency	50 to 60 Hz
Number of Products on MCB (16A Type B) (Nom)	159
Wiring	
Connector Type Input Terminals	Insert
Color Input Terminals	Black
Color Output Terminals	Grey
Connector Type Output Terminals	Insert
Cable Length From Device to Lamp	1.50 m
Temperature	
Ambient temperature range	-10 °C to 40 °C
T-Case Maximum (Max)	75 °C
Mechanical and Housing	
Housing	SH

Approval and Application	
Ingress protection code	IP20 [Finger-protected]
Approval Marks	F-Marking CE marking ENEC certificate CB Certificate
Product Data	
Order product name	HF-M RED 109 SH TL/PL-S 230-240V
Full product name	HF-M RED 109 SH TL/PL-S 230-240V
Full product code	871150093142930
Order code	93142930
Material Nr. (12NC)	913700422866
Numerator - Quantity Per Pack	1
EAN/UPC - Product/Case	8711500931429
Numerator - Packs per outer box	50
EAN/UPC - Case	8711500931436

HF-Matchbox Red

Dimensional drawing



Product	D1	C1	C2	A1	A2	B1
HF-M RED 109 SH TL/PL-S 230-240V	4.4 mm	22.0 mm	10.0 mm	80.0 mm	70.0 mm	40.0 mm

