

HF-Matchbox Red

HF-M RED 114 SH TL/TL5 230-240V

HF-Matchbox Red is an affordable, reliable, compact, lightweight and high-frequency ballast for use with system wattages below 25 W in combination with TL mini, TL-D, TL5 and TL5c, PL-T/C, and PL-L/S lamps. The HF-M Red range has a robust design, meets all relevant international safety and performance standards and has an energy efficiency index (CELMA EEI) of A2.

Product data

General Information	
Lamp type	TL/TL5/PL-C/S
Number of lamps	1 piece/unit
Number of products on MCB (16 A type B) (nom.)	101
Automatic restart	Yes
Operating and Electrical	
Input voltage	230 to 240 V
Input frequency	50 to 60 Hz
Power factor 100% load (nom.)	0.64
Ignition time (max.)	1.55 s
Mains voltage performance (AC)	-8%+6%
Mains voltage safety (AC)	-10%+10%
Power losses (nom.)	2.9 W
Wiring	
Connector type input terminals	Insert
Colour input terminals	Blue
Colour output terminals	Grey
Connector type output terminals	Insert
Cable length hot-wiring	0.75 m

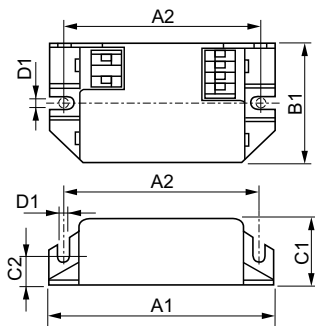
Wire strip length	8.0-9.0 mm
Input terminal cross section	0.50-1.50 mm ²
Output terminal cross section	0.50-1.50 mm ²
System characteristics	
Rated ballast-lamp power	14 W
Rated lamp power on TL5	14 W
System power on TL5	16 W
Lamp power on TL5	13.1 W
Power loss on TL5	2.9 W
System power on PL-C	10.6 W
Rated lamp power on PL-C	14 W
Power loss on PL-C	1.7 W
Lamp power on PL-C	8.9 W
Temperature	
T ambient (max.)	50 °C
T ambient (min.)	-25 °C
T-Case maximum (max.)	80 °C

HF-Matchbox Red

Mechanical and Housing	
Housing	SH
Emergency Operation	
Battery voltage lamp ignition	190-254 V
Approval and Application	
IP classification	IP 20 [Ingress Protection 20]
Approval marks	CE marking ENEC certificate
Product Data	
Full product code	871150093140530

Order product name	HF-M RED 114 SH TL/TL5/PL-C/S 230-240V
EAN/UPC – product	8711500931405
Order code	93140530
Local Code	HFMRED114SH
Numerator – quantity per pack	1
Numerator – packs per outer box	50
Material no. (12NC)	913700423266
Net weight (piece)	0.034 kg

Dimensional drawing



Product	D1	C1	C2	A1	A2	B1
HF-M RED 114 SH	4.2 mm	22.0	10.0	80.0	70.0	40.0
TL/TL5/PL-C/S		mm	mm	mm	mm	mm
230-240V						

HF-M RED 114 SH TL/TL5/PL-C/S 230-240V

