

Mark 10 Powerline

MARK 10 POWERLINE ELE DIM BALLAST (2) 26W CFL (4-PIN) 120V

For companies looking to make their fixed-output linear T8, 4-pin CFL, and T5/HO fluorescent systems more cost effective and sustainable, Mark 10 Powerline ballasts provide an easy solution without the need for additional control leads. Simply, (1) replace the ballast, (2) replace the switch, (3) dim the lights, that is all it takes. It's that easy to bring the convenience and flexibility of fluorescent dimming to conference rooms, private offices, auditoriums, architectural cove lighting – anywhere dimming is required.

Product data

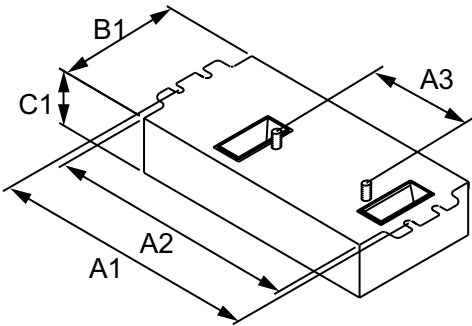
| General Information | | | |
|---------------------------------|----------------------|--|----------------|
| Lamp Type | CFQ26W/G24Q | Input Power (Max) | 58 W |
| Number of Lamps | 2 piece/unit | Input Power (Min) | 16 W |
| Ballast Type | Dimmable Fluorescent | Rated Lamp Watts | 26 W |
| Base Model | REZ2Q26M2BS | Wiring | |
| Suitable For Outdoor Use | Yes | Color Input Terminals | BLK & WHT |
| Automatic Restart | Yes | Color Output Terminals | RED, YEL & BLU |
| Operating and Electrical | | Wire Striplength | 0.375 mm |
| Input Voltage | 120 V | Control Wire Gauge | NA |
| Input Frequency | 60 Hz | Lamp Connection | Series |
| Max THD | 10 % | Wire Length by Color | No wires |
| Starting Method | Programmed Start | Wire Gauge (Nom) | 18AWG mm |
| Lamp Current Crest Factor (Nom) | 1.6 | Wire Type | Solid |
| Ignition Time (Nom) | 1.5 s | Remote Wiring Configuration Allowed | No |
| Ballast Factor (Max) | 1 | Tandem Wiring Configuration Allowed | No |
| Ballast Factor (Min) | 0.05 | Through Wiring Configuration Allowed | No |
| Power Factor (Nom) | 0.98 | Max Ballast-Lamp Distance Remote Wiring | No Remote |
| Input Current (Operating) (Nom) | 0.48 A | Max Ballast-Lamp Distance Tandem Wiring | No Tandem |
| | | Max Ballast-Lamp Distance Through Wiring | No Through |

Mark 10 Powerline

| | |
|--------------------------|--|
| Connector Type | Poke-In |
| Temperature | |
| T-Case Maximum (Nom) | 70 °C |
| Mechanical and Housing | |
| Housing Material | Metal |
| Housing | M2 |
| Housing Dimensions | 4.98" x 3.0" x 1.29" |
| Approval and Application | |
| EMC Immunity Standard | FCC Consumer |
| Approbation Marks | CSA certificate UL certificate CEC Listing RoHS Compliant |

| | |
|---------------------------------|---|
| Sound Rating | A |
| UL Recognized | No |
| Product Data | |
| Order product name | MARK 10 POWERLINE ELE DIM BALLAST (2) 26W CFL (4-PIN) 120V |
| EAN/UPC - Product | 781087114391 |
| Order code | REZ2Q26M2BS35M |
| Numerator - Quantity Per Pack | 1 |
| Numerator - Packs per outer box | 16 |
| Material Nr. (12NC) | 913700507871 |
| Net Weight (Piece) | 0.314 kg |

Dimensional drawing



ELE DIM BALLAST (2) 26W CFL (4-PIN) 120V

| Product | A1 | A2 | A3 | B1 | C1 |
|---|---------|---------|---------|---------|---------|
| MARK 10 POWERLINE ELE DIM BALLAST (2) 26W CFL (4-PIN) 120V | 4.55 in | 4.20 in | 2.00 in | 3.00 in | 1.29 in |

