

SmartMate

SMARTMATE ELE BALLAST (2) 26W CFL (4-PIN) 120-277V

Offering maximum versatility, the Philips Advance family of SmartMate ballasts for 4-pin compact fluorescent lamps drive a broad range of quad and triple-tube, circline, 2D, and long twin-tube lamps. SmartMate ballasts' energy efficient design, compact and lightweight housing, and user-friendly features make these ballasts an ideal choice for fixture manufacturers, retrofitters, and MRO replacement.

Product data

General Information	
Lamp type	CFQ26W/G24Q
Number of lamps	1/2 piece/unit
Ballast type	Electronic Fluorescent
Base model	ICF2S26H1LD
Suitable for outdoor use	Yes
Automatic restart	Yes
Operating and Electrical	
Input voltage	120 to 277 V
Input frequency	50 to 60 Hz
Total harmonic distortion USA	10 %
Ignition method	Programmed Start
Crest factor (nom.)	1.5
Ignition time (nom.)	1.5 s
Ballast factor (nom.)	1
Power factor (nom.)	0.98
Input current (max.)	0.43 A
Input current (min.)	0.19 A
Input power (nom.)	51-51 W

Rated lamp power	26 W
Wiring	
Colour input terminals	BLK & WHT
Colour output terminals	RED, YEL & BLU
Wire strip length	0.375 mm
Lamp connection	Series
Wire length by colour	No wires
Wire gauge (nom.)	18AWG mm
Wire type	Solid
Remote wiring configuration allowed	Yes
Tandem wiring configuration allowed	Yes
Through-wiring configuration allowed	Yes
Max. ballast-lamp distance remote wiring	1-L = 15' / 2-L = 6'
Max. ballast-lamp distance tandem wiring	2-L: Red = 6'
Max. ballast-lamp distance through-wiring	2-L: Red = 6'
Connector type	Poke-In
Temperature	
T-Case maximum (nom.)	75 °C

Mechanical and Housing

Housing material	Metal-Plastic
Housing	H1
Housing dimensions	4.98" x 2.4" x 0.98"

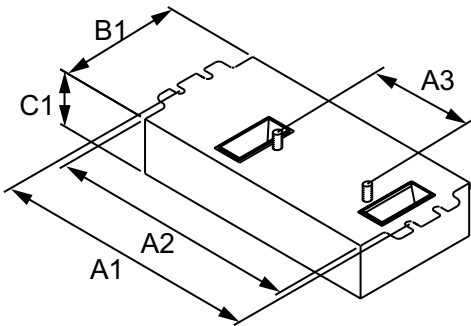
Approval and Application

EMC immunity standard	FCC Non-Consumer
Approval marks	CSA certificate UL certificate CEC Listing NOM certificate RoHS Compliant
Humming and noise level	A
UL recognised	No

Product Data

Full product code	978108710289330
Order product name	SMARTMATE ELE BALLAST (2) 26W CFL (4-PIN) 120-277V
EAN/UPC – product	781087102893
Order code	10289330
Numerator – quantity per pack	1
Numerator – packs per outer box	20
Material no. (12NC)	913700508961
Net weight (piece)	151.000 g

Dimensional drawing



ELE BALLAST (2) F80T5HO 120-277V

Product	A1	A2	A3	B1	C1
SMARTMATE ELE BALLAST (2) 26W CFL (4-PIN) 120-277V	4.60 in	4.20 in	2.00 in	2.40 in	0.98 in

