



HF-Performer II Xtreme for TL5/TL-D lamps

HF-P Xt 136 TL-D EII 220-240V 50/60Hz

Enhance the quality of applications with robust driver technology. HF-Performer Xtreme is a unique X-technology from Philips that guarantees the longest lifetime and highest reliability under the harshest conditions. The ballast is primarily designed for Indoor application. For outdoor application, the luminaire should be minimum Classland need to be sufficiently protected against water & dust. The installation should also be guard against any lightening surge or any other necessary electrical protection as deemed in such typical installation & application.

Product data

Operating and Electrical	
Input Voltage	220 to 240 V
Line Frequency	50 to 60 Hz
Input Frequency	50 to 60 Hz
Inrush Current Width	0.270 ms
Inrush Current Peak (Max)	18 A
Number of Products on MCB (16A Type B) (Nom)	28
Wiring	
Connector Type Input Terminals	WAGO 251 universal connector [Suitable for both automatic wiring (ALF and ADS) and manual wiring]

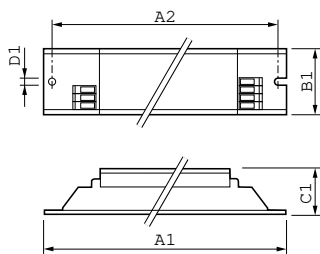
Connector Type Output Terminals	WAGO 251 universal connector [Suitable for both automatic wiring (ALF and ADS) and manual wiring]
Temperature	
Ambient temperature range	-25 °C to 60 °C
T-Case Lifetime (Nom)	75 °C
T-Case Maximum (Max)	75 °C
Mechanical and Housing	
Housing	L 360x30x28
Approval and Application	
Ingress protection code	IP20 [Finger-protected]
Energy Efficiency Index	A2

HF-Performer II Xtreme for TL5/TL-D lamps

Safety Standard	IEC 61347-2-3
Environmental Standard	ISO 14001
Approval Marks	CE marking ENEC certificate VDE-EMV certificate
Product Data	
Order product name	HF-P Xt 136 TL-D EII 220-240V 50/60Hz
Full product name	HF-P Xt 136 TL-D EII 220-240V 50/60Hz
Full product code	871150091200830

Order code	913700617766
Material Nr. (12NC)	913700617766
Numerator - Quantity Per Pack	1
EAN/UPC - Product/Case	8711500912008
Numerator - Packs per outer box	12
EAN/UPC - Case	8711500912015

Dimensional drawing



Product	D1	C1	A1	A2	B1
HF-P Xt 136 TL-D EII 220-240V 50/60Hz	4.2 mm	28.0 mm	360.0 mm	350.0 mm	30.0 mm

