



HF-Performer II Xtreme for TL5/TL-D lamps

HF-P Xt 258 TL-D EII 220-240V 50/60Hz

HF-Performer Xtreme is a unique X-technology from Philips that guarantees the highest lifetime reliability for lamps and enables an extra-long and reliable HF system life with an energy efficiency index (CELMA EEI) of A2.

Product data

Operating and Electrical	
Input Voltage	220 to 240 V
Line Frequency	50 to 60 Hz
Input Frequency	50 to 60 Hz
Inrush Current Width	0.350 ms
Inrush Current Peak (Max)	31 A
Number of Products on MCB (16A Type B) (Nom)	12
Wiring	
Connector Type Input Terminals	WAGO 251 universal connector [Suitable for both automatic wiring (ALF and ADS) and manual wiring]
Connector Type Output Terminals	WAGO 251 universal connector [Suitable for both automatic wiring (ALF and ADS) and manual wiring]
Temperature	
Ambient temperature range	-25 °C to 60 °C

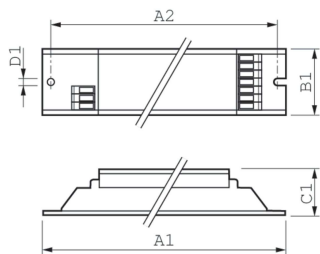
T-Case Lifetime (Nom)	75 °C
T-Case Maximum (Max)	75 °C
Mechanical and Housing	
Housing	L 360x30x28
Approval and Application	
Ingress protection code	IP20 [Finger-protected]
Energy Efficiency Index	A2
Safety Standard	IEC 61347-2-3
Environmental Standard	ISO 14001
Approval Marks	CE marking ENEC certificate VDE-EMV certificate
Product Data	
Order product name	HF-P Xt 258 TL-D EII 220-240V 50/60Hz
Full product name	HF-P Xt 258 TL-D EII 220-240V 50/60Hz
Full product code	871150091206030
Order code	913700618066

HF-Performer II Xtreme for TL5/TL-D lamps

Material Nr. (12NC)	913700618066
Numerator - Quantity Per Pack	1
EAN/UPC - Product/Case	8711500912060
Numerator - Packs per outer box	12

EAN/UPC - Case	8711500912077
----------------	---------------

Dimensional drawing



Product	D1	C1	A1	A2	B1
HF-P Xt 258 TL-D EII 220-240V 50/60Hz	4.2 mm	28.0 mm	360.0 mm	350.0 mm	30.0 mm

