



HF-Performer II for PL-T/C/R/L/TL5C lamps

HF-P 2 22-42 PL-T/C/L/TL5C EII 220-240V

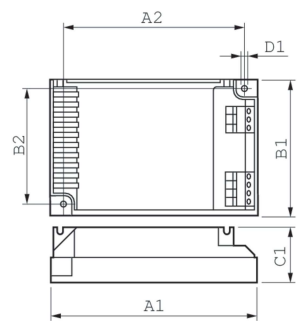
Compact, lightweight high-frequency electronic ballast for PL-T/C/TL5C/R/L fluorescent lamps, based on EII technology

Product data

Operating and Electrical		Energy Efficiency Index	
Input Voltage	220 to 240 V	A2	
Line Frequency	50 to 60 Hz	Safety Standard	
Input Frequency	50 to 60 Hz	IEC 61347-2-3	
Inrush Current Width	0.35 ms	Environmental Standard	
Inrush Current Peak (Max)	31 A	ISO 14001	
Number of Products on MCB (16A Type B) (Nom)	12	Approval Marks	
		CE marking ENEC certificate VDE-EMV certificate	
Wiring		Product Data	
Connector Type Input Terminals	Insert	Order product name	
Connector Type Output Terminals	Insert	HF-P 2 22-42 PL-T/C/L/TL5C EII 220-240V	
		Full product name	
		HF-P 2 22-42 PL-T/C/L/TL5C EII 220-240V	
		Full product code	
		871150091399930	
		Order code	
		91399930	
		Material Nr. (12NC)	
		913700630866	
		Numerator - Quantity Per Pack	
		1	
		EAN/UPC - Product/Case	
		8711500913999	
		Numerator - Packs per outer box	
		12	
		EAN/UPC - Case	
		8711500914019	
Temperature			
Ambient temperature range	-25 °C to 50 °C		
T-Case Lifetime (Nom)	75 °C		
T-Case Maximum (Max)	75 °C		
Approval and Application			
Ingress protection code	IP20 [Finger-protected]		

HF-Performer II for PL-T/C/R/L/TL5C lamps

Dimensional drawing



Product	D1	C1	A1	A2	B1	B2
HF-P 2 22-42 PL-T/C/L/ TL5C EII 220-240V	4.5 mm	30.0 mm	103.0 mm	93.5 mm	67.0 mm	57.5 mm

