

PHILIPS

Lighting



HF-Performer II for PL-T/C/R/L/TL5C lamps

HF-P 2 22-42 PL-T/C/L/TL5C EII 220-240V

HF-Performer EII PL-T/C/R/T5c is a sustainable, slim and high-frequency electronic ballast for a wide range of CFL- ni applications. It is ideal for applications where high energy efficiency is required. The HF-Performer EII range has a robust design, meets all relevant international safety and performance standards and is energy-efficient (CELMA EEI A2).

Product data

General Information			
Application Code	EII	Power Factor 100% Load (Nom)	0.95
Type Version	mk4	Ignition Time (Max)	0.52 s
Lamp Type	PL-T/C/L/TL5C	Mains Voltage Performance (AC)	-8% - +6%
Number of Lamps	2 piece/unit	Mains Voltage Safety (AC)	-10% - +10%
Number of Products on MCB (16A Type B) (Nom)	12	Earth Leakage Current (Nom)	0.5 mA
Automatic Restart	Yes	Inrush Current Width	0.35 ms
Operating and Electrical		Constant Wattage Deviation	-2% / +2%
Input Voltage	220 to 240 V	Ballast Factor (Nom)	1
Input Frequency	50 to 60 Hz	Power Losses (Nom)	4.35-4.93 W
Operating Frequency (Max)	- kHz	Inrush Current Peak (Max)	31 A
Operating Frequency (Min)	42 kHz	Wiring	
Operating Frequency (Nom)	45 kHz	Connector Type Input Terminals	Insert
Ignition Method	Warm Start	Cable Capacity Output Wires Mutual (Nom)	100 pF
Crestfactor (Max)	1.7	Connector Type Output Terminals	Insert
		Cable Length Hot Wiring	0.75 m
		Wire Striplength	7.5-8.5 mm

HF-Performer II for PL-T/C/R/L/TL5C lamps

Dual Fixture Master/Slave	Not applicable [Master/Slave oper. not applicable]
Input Terminal Cross Section	0.50-1.50 mm ²
Output Terminal Cross Section	0.50-1.50 mm ²
Cable Capacity Output Wires to Earth (Nom)	100 pF

System characteristics

Rated Ballast-Lamp Power	22-42 W
Rated Lamp Power on PL-T/C	22/42 W

Temperature

T-Ambient (Max)	50 °C
T-Ambient (Min)	-25 °C
T-Storage (Max)	80 °C
T-Storage (Min)	-40 °C
T-Case Lifetime (Nom)	75 °C
T-Case Maximum (Max)	75 °C
T-Ignition (Max)	50 °C
T-Ignition (Min)	-25 °C

Emergency Operation

Battery Voltage Lamp Ignition	198-254 V
Battery Voltage Lamp Operation	176-254

Approval and Application

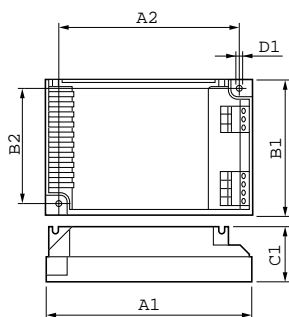
Energy Efficiency Index	A2
IP Classification	IP 20 [Ingress Protection 20]
EMI 9 kHz ... 30 MHz	EN55015

EMI 30 MHz ... 1000 MHz	EN55022 level B
Safety Standard	IEC 61347-2-3
Performance Standard	IEC 60929
Quality Standard	ISO 9000:2000
Environmental Standard	ISO 14001
Harmonic Current Emission Standard	IEC 61000-3-2
EMC Immunity Standard	IEC 61547
Vibration Standard	IEC68-2-6 F c
Bumps Standard	IEC 68-2-29 Eb
Humidity Standard	EN 61347-2-3 clause 11
Approval Marks	CE marking ENEC certificate VDE-EMV certificate
Temperature Marking	Yes
Emergency Standard	IEC 60598-2-22
Hum And Noise Level	Inaudible

Product Data

Full product code	871150091399930
Order product name	HF-P 2 22-42 PL-T/C/L/TL5C EII 220-240V
EAN/UPC - Product	8711500913999
Order code	913700630866
Numerator - Quantity Per Pack	1
Numerator - Packs per outer box	12
Material Nr. (12NC)	913700630866
Net Weight (Piece)	0.150 kg

Dimensional drawing



HF-P 2 22-42 PL-T/C/L/TL5C EII 220-240V

Product	D1	C1	A1	A2	B1	B2
HF-P 2 22-42 PL-T/C/L/	4.5 mm	30.0	103.0	93.5	67.0	57.5
TL5C EII 220-240V		mm	mm	mm	mm	mm

HF-Performer II for PL-T/C/R/L/TL5C lamps

