



HF-Performer II for PL-T/C/R/L/TL5C lamps

HF-P 1 13-17 PL-T/C/R EII 220-240V

HF-Performer EII PL-T/C/R/T5c is a sustainable, slim and high-frequency electronic ballast for a wide range of CFL- ni applications. It is ideal for applications where high energy efficiency is required. The HF-Performer EII range has a robust design, meets all relevant international safety and performance standards and is energy-efficient (CELMA EEI A2).

Product data

Operating and Electrical	
Input Voltage	220 to 240 V
Line Frequency	50 to 60 Hz
Input Frequency	50 to 60 Hz
Inrush Current Width	0.25 ms
Inrush Current Peak (Max)	18 A
Number of Products on MCB (16A Type B) (Nom)	28
Wiring	
Connector Type Input Terminals	Insert
Connector Type Output Terminals	Insert
Temperature	
Ambient temperature range	-25 °C to 50 °C
T-Case Lifetime (Nom)	75 °C

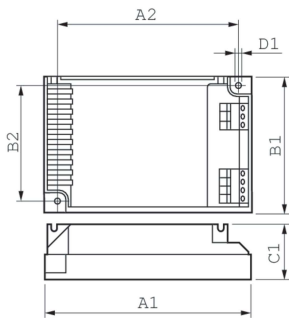
T-Case Maximum (Max)	75 °C
Approval and Application	
Ingress protection code	IP20 [Finger-protected]
Energy Efficiency Index	A2
Safety Standard	IEC 61347-2-3
Environmental Standard	ISO 14001
Approval Marks	CE marking ENEC certificate VDE-EMV certificate

Product Data	
Order product name	HF-P 1 13-17 PL-T/C/R EII 220-240V
Full product name	HF-P 1 13-17 PL-T/C/R EII 220-240V
Full product code	871150091407130
Order code	913700631166
Material Nr. (12NC)	913700631166
Numerator - Quantity Per Pack	1

HF-Performer II for PL-T/C/R/L/TL5C lamps

EAN/UPC - Product/Case	8711500914071
Numerator - Packs per outer box	12
EAN/UPC - Case	8711500914088

Dimensional drawing



Product	D1	C1	A1	A2	B1	B2
HF-P 113-17 PL-T/C/R EII 220-240V	4.5 mm	30.0 mm	103.0 mm	93.5 mm	67.0 mm	57.5 mm

