



# PrimaVision Twin for CDM

## HID-PV C 2x35 /I CDM 220-240V SOFT START

Dual CDM lamp operation, single HID electronic gear – improves cost effectiveness and increases luminaire design flexibility

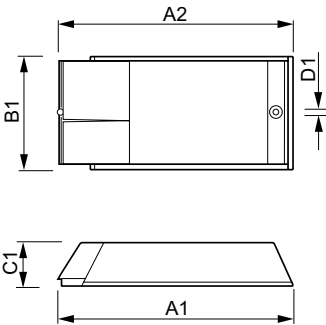
### Product data

Operating and Electrical	
Input Voltage	220 to 240 V
Line Frequency	50 to 60 Hz
Input frequency	50 to 60 Hz
Earth leakage current (max.)	0.5 mA
Inrush current width	1.85 ms
Inrush current peak (max.)	33 A
Number of products on MCB (16 A type B) (nom.)	20
Wiring	
Cable length from device to lamp	1.5 m
Connector type	Insert
Temperature	
Ambient temperature range	-20°C to 55°C
T-case lifetime (nom.)	75 °C
T-Case maximum (max.)	80 °C
Mechanical and Housing	
Housing	/I

Approval and Application	
Approval marks	F-Marking CE marking ENEC certificate CB Certificate
Product Data	
Order product name	HID-PV C 2x35 /I CDM 220-240V SOFT START
Full product name	HID-PV C 2x35 /I CDM 220-240V SOFT START
Full EOC	872790089704300
Order code	89704300
Material no. (12 NC)	913700656466
SAP numerator – quantity per pack	1
EAN/UPC – Product/Case	8711500881854
Numerator – packs per outer box	6
EAN/UPC - Case	8727900897043

PrimaVision Twin for CDM

Dimensional drawing



Product	D1	C1	A1	A2	B1
HID-PV C 2x35 /I CDM 220-240V	4.5 mm	35.0 mm	245.0 mm	226.0 mm	94.0 mm
SOFT START					

