



# HF-Regulator Intelligent Touch DALI for PL-T/C and TL5C

## HF-Ri TD 1 26-42 PL-T/C E+

Intelligent high-frequency electronic dimming ballast, using DALI (Digital Addressable Lighting Interface according to IEC62386) or Touch and Dim push-button protocol for fluorescent lamps. Features Corridor Mode, programmable with Philips MultiOne. High-frequency operation improves light quality and lamp lifetime. Pre-empts upcoming legislation as it meets A1BAT requirements.

### Product data

Operating and Electrical	
Input Voltage	195-240 V
Line Frequency	50 to 60 Hz
Input Frequency	50 to 60 Hz
Earth Leakage Current (Max)	0.5 mA
Inrush Current Width	0.35 ms
Inrush Current Peak (Max)	27 A
Number of Products on MCB (16A Type B) (Nom)	28
Wiring	
Connector Type Input Terminals	WAGO 250 series
Connector Type Output Terminals	WAGO 250 series
Temperature	
Ambient temperature range	-25 °C to 50 °C
T-Case Lifetime (Max)	75 °C

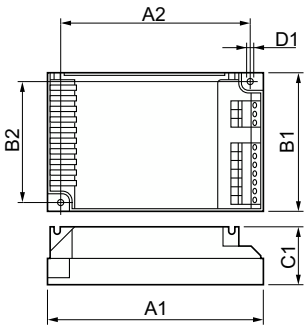
T-Case Maximum (Max)	75 °C
Controls and Dimming	
Control Interface	TD
Mechanical and Housing	
Housing	L 123x79x33
Approval and Application	
Ingress protection code	IP20 [Finger-protected]
Energy Efficiency Index	A1 BAT
Safety Standard	IEC 61347-2-3
Environmental Standard	ISO 14001
Approval Marks	EMC CE marking ENEC certificate CCC certificate

HF-Regulator Intelligent Touch DALI for PL-T/C and TL5C

Product Data	
Order product name	HF-Ri TD 1 26-42 PL-T/C E+
Full product name	HF-Ri TD 1 26-42 PL-T/C E+
Full product code	871829124167600
Order code	24167600
Material Nr. (12NC)	913700684766

Numerator - Quantity Per Pack	1
EAN/UPC - Product/Case	8718291241676
Numerator - Packs per outer box	12
EAN/UPC - Case	8718291241683

Dimensional drawing



Product	D1	C1	A1	A2	B1	B2
HF-Ri TD 1 26-42 PL-T/C E	4.5 mm	33.0 mm	123.0 mm	111.0 mm	79.0 mm	67.0 mm
+						

