



# PrimaVision Xtreme for CDO

## PV Xt Q 70W CDO

Highly reliable electronic drivers for CDO lamps; designed to save energy by offering better light efficiency than magnetic drivers and to reduce maintenance costs thanks to 80,000-hour lifetime and integrated lightning protection

### Product data

Operating and Electrical	
Input Voltage	208-240-277 V
Line Frequency	50 to 60 Hz
Input frequency	50 to 60 Hz
Earth leakage current (max.)	0.7 mA
Inrush current width	0.24 ms
Input current (nom.)	0.39 A
Inrush current peak (max.)	28 A
Number of products on MCB (16 A type B) (nom.)	11
Wiring	
Cable length from device to lamp	10 m
Connector type	WAGO series 804
Temperature	
Ambient temperature range	-30 °C to 55 °C
T-case lifetime (nom.)	80 °C

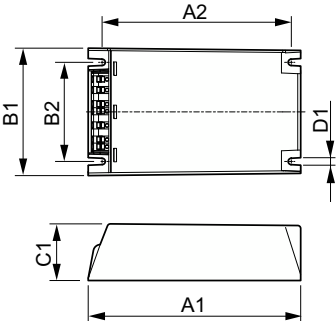
Mechanical and Housing	
Housing	Q
Approval and Application	
Surge Protection (Common/Differential)	EN61547 (L-L 2 kV, L-G 4 kV), 10 kV TIL
Safety standard	IEC 607, 609, 926, 928 [No Standard for HID Lamp drivers exists. Requirements in these standards to be used if considered relevant for the product.]
Environmental standard	ISO 14001
Approval marks	F-Marking CE marking ENEC certificate VDE-EMV certificate

Product Data	
Order product name	PV Xt Q 70W CDO
Full product name	PV Xt Q 70W CDO
Full EOC	871829169886900
Order code	69886900
Material no. (12 NC)	913700690966
Local order code	PVXT70CDOQ
SAP numerator – quantity per pack	1
EAN/UPC – Product/Case	8718291698869

PrimaVision Xtreme for CDO

Numerator – packs per outer box	12
EAN/UPC - Case	8718291698876

Dimensional drawing



Product	D1	C1	A1	A2	B1	B2
PV Xt Q 70W CDO	4.5 mm	40.0 mm	150.0 mm	133.6 mm	90.0 mm	70.0 mm

