



DynaVision Programmable Xtreme for SON

HID-DV PROG Xt 50 SON Q 208-277V

Highly reliable and flexible electronic drivers for SON lamps; designed to save energy via integrated controls, and to reduce maintenance costs thanks to 80,000-hour lifetime and integrated lightning protection. The DynaVision Programmable product family is the perfect basis for any sort of lighting management solution.

Product data

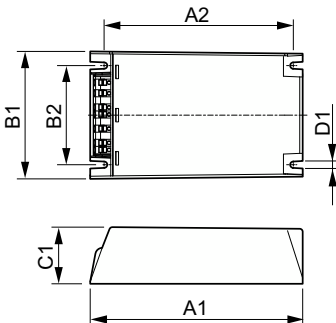
Operating and Electrical		T-Case Lifetime (Nom)		80 °C
Input Voltage	208-240-277 V			
Line Frequency	50 to 60 Hz	Controls and Dimming		
Input Frequency	50 to 60 Hz	Control Interface		PROG
Earth Leakage Current (Max)	0.7 mA			
Inrush Current Width	0.24 ms	Mechanical and Housing		
Input Current (Nom)	0.27 A	Housing		Q
Inrush Current Peak (Nom)	28 A			
Number of Products on MCB (16A Type B) (Nom)	11	Approval and Application		
		Surge Protection (Common/Differential)		EN61547 (L-L 2kV, L-G 4kV), 10 kV TIL
Wiring		Safety Standard		IEC 607, 609, 926, 928 [No Standard for HID Lamp drivers exists. Requirements in these standards to be used if considered relevant for the product.]
Cable Length From Device to Lamp	10 m	Environmental Standard		ISO 14001
Connector Type	WAGO series 804	Approval Marks		F-Marking CE marking ENEC certificate VDE-EMV certificate
Temperature				
Ambient temperature range	-30 °C to 55 °C			

DynaVision Programmable Xtreme for SON

Product Data	
Order product name	HID-DV PROG Xt 50 SON Q 208-277V
Full product name	HID-DV PROG Xt 50 SON Q 208-277V
Full product code	871829166924100
Order code	66924100
Material Nr. (12NC)	913700693366

Numerator - Quantity Per Pack	1
EAN/UPC - Product/Case	8718291669241
Numerator - Packs per outer box	12
EAN/UPC - Case	8718291669258

Dimensional drawing



Product	D1	C1	A1	A2	B1	B2
HID-DV PROG Xt 50 SON Q 208-277V	4.5 mm	40.0 mm	150.0 mm	133.6 mm	90.0 mm	70.0 mm

