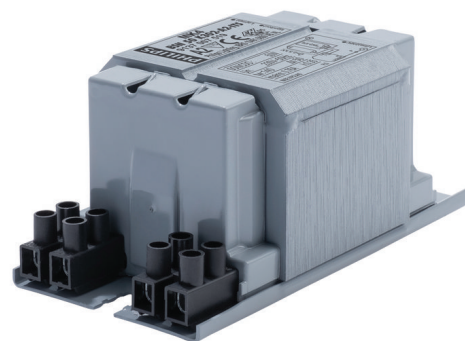


# PHILIPS

## Lighting



# HID-Basic BSN/BMH MK4 semi-parallel for SON/CDO/CDM/MH/ HPI

## BSN 50 K302-A2-ITS 230V 50Hz

Impregnated electromagnetic copper ballasts for use with an external semi-parallel ignitor for CDM, CDO, MH, HPI (Plus) and SON lamps

### Product data

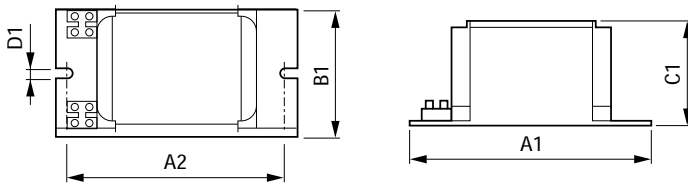
General Information		Power losses (nom.)	
Application code	K302-A2-ITS		8.3 W
Design	BC1-118	Wiring	
Lamp type	SON/CDO	Wire strip length	6.0 mm
Number of lamps	1 piece/unit	Ballast contact wire cross section	2.5 mm <sup>2</sup>
		Connector type	Screw
Operating and Electrical		System characteristics	
Input voltage	230 V	Capacitor	10µF/250V
Input frequency	50 Hz	Rated ballast-lamp power	50 W
Power factor 100% load (nom.)	0.85	Recommended ignitor	for SON/CDO/CDM lamps ignitor SKD 578 (913700655366) or series digital SUD40 (913700193591) only CDM
Mains voltage performance (AC)	-8%+6%	Temperature	
Mains voltage safety (AC)	-10%+10%	T storage (max.)	130 °C
Input current with PF correction	0.35 A	T storage (min.)	-30 °C
Input current without PF Correction	0.76 A		
Power factor without PF compensation (nom.)	0.35		

## HID-Basic BSN/BMH MK4 semi-parallel for SON/CDO/CDM/MH/HPI

T winding (max.)	140 °C
Delta-T normal conditions	50 °C
<b>Approval and Application</b>	
Active temperature protection	Yes
Approval marks	CE marking ENEC certificate
<b>Product Data</b>	
Full product code	871869674078100

Order product name	BSN 50 K302-A2-ITS 230V 50Hz
EAN/UPC – product	8718696740781
Order code	74078100
Numerator – quantity per pack	1
Numerator – packs per outer box	6
Material no. (12NC)	913700751926
Net weight (piece)	1.260 kg

### Dimensional drawing



Product	A1	A2	B1	C1	D1
BSN 50 K302-A2-ITS 230V 50Hz	118 mm	94 mm	61 mm	52 mm	6.2 mm

BSN 50 K302-A2-ITS 230V 50Hz

