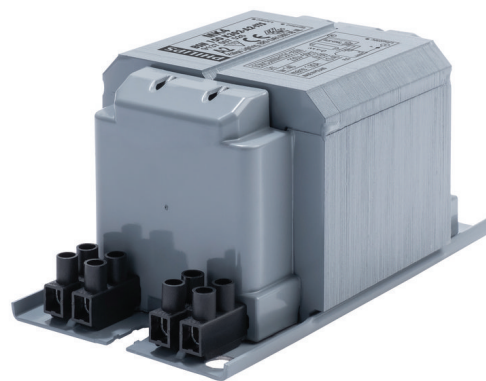


PHILIPS

Lighting



HID-Basic BSN/BMH MK4 semi-parallel for SON/CDO/CDM/MH/ HPI

BSN 150 K302-A2-ITS 230V 50Hz

Impregnated electromagnetic copper ballasts for use with an external semi-parallel ignitor for CDM, CDO, MH, HPI (Plus) and SON lamps

Product data

General Information

Application Code	K302-A2-ITS
Design	BC2-134
Lamp Type	SON/MH/CDM/CDO
Number of Lamps	1 piece/unit

Operating and Electrical

Input Voltage	230 V
Input Frequency	50 Hz
Power Factor 100% Load (Nom)	0.85
Mains Voltage Performance (AC)	-8%~+6%
Mains Voltage Safety (AC)	-10%~+10%
Input Current with PF Correction	0.85 A
Input Current without PF Correction	1.8 A
Power Factor without PF Compensation (Nom)	0.4

Power Losses (Nom)	16.4 W
--------------------	--------

Wiring

Wire Striplength	6.0 mm
Ballast Contact Wire Cross Section	2.5 mm ²
Connector Type	Screw

System characteristics

Capacitor	20µF/250V
Rated Ballast-Lamp Power	150 W
Recommended Ignitor	for SON/CDO/CDM lamps ignitor SKD 578 (913700655366)

Temperature

T-Storage (Max)	130 °C
T-Storage (Min)	-30 °C
T-Winding (Max)	140 °C

HID-Basic BSN/BMH MK4 semi-parallel for SON/CDO/CDM/MH/HPI

Delta-T Normal Conditions	55 °C
---------------------------	-------

Approval and Application

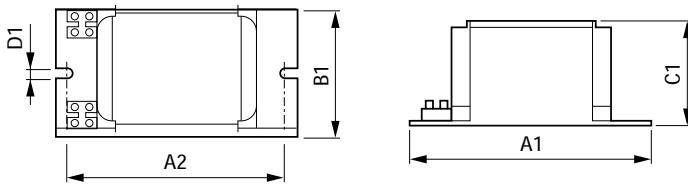
Active Temperature Protection	Yes
Approval Marks	CE marking ENEC certificate

Product Data

Full product code	871869674096500
Order product name	BSN 150 K302-A2-ITS 230V 50Hz

EAN/UPC - Product	8718696740965
Order code	74096500
Numerator - Quantity Per Pack	1
Numerator - Packs per outer box	6
Material Nr. (12NC)	913700752626
Net Weight (Piece)	2.240 kg

Dimensional drawing



Product	A1	A2	B1	C1	D1
BSN 150 K302-A2-ITS 230V 50Hz	134 mm	113 mm	76 mm	65 mm	6.2 mm

BSN 150 K302-A2-ITS 230V 50Hz

