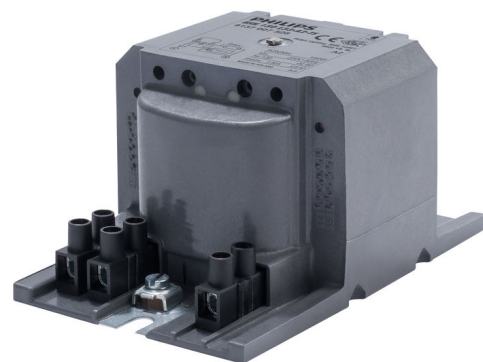


PHILIPS

Lighting



HID-HeavyDuty BSN semi-parallel for SON/CDO/MH/HPI

BSN 150 L33-A2-TS 230V 50Hz

Encapsulated electromagnetic copper/iron ballasts for use with an external semi-parallel ignitor for CDM, CDO, MH, HPI (Plus) and SON lamps (no ignitor needed for SON-I lamps)

Product data

General Information

Application Code	L33-A2-TS
Design	HD2-126
Lamp Type	SON/MH
Number of Lamps	1 piece/unit

Operating and Electrical

Input Voltage	230 V
Input Frequency	50 Hz
Power Factor 100% Load (Nom)	0.85
Mains Voltage Performance (AC)	-8%+6%
Mains Voltage Safety (AC)	-10%+10%
Input Current with PF Correction	0.85 A
Input Current without PF Correction	1.8 A
Power Factor without PF Compensation (Nom)	0.4
Power Losses (Nom)	17 W

Wiring

Wire Striplength	6.0 mm
Ballast Contact Wire Cross Section	2.5 mm ²
Connector Type	Screw

System characteristics

Capacitor	18 μ F/250V
Rated Ballast-Lamp Power	150 W
Recommended Ignitor	for SON lamps ignitor SND 58 (913700185166) or series digital SUD40 (913700193591)

Temperature

T-Storage (Max)	130 °C
T-Storage (Min)	-30 °C
T-Winding (Max)	130 °C
Delta-T Normal Conditions	60 °C

HID-HeavyDuty BSN semi-parallel for SON/CDO/MH/HPI

Approval and Application

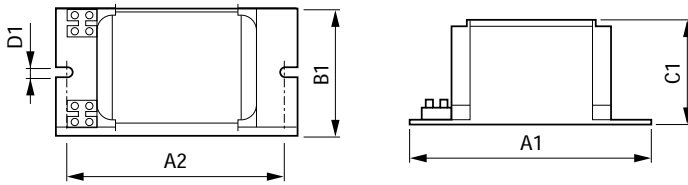
Active Temperature Protection	Yes
Approval Marks	CE marking ENEC certificate

Product Data

Full product code	871869674100900
Order product name	BSN 150 L33-A2-TS 230V 50Hz
EAN/UPC - Product	8718696741009

Order code	74100900
Numerator - Quantity Per Pack	1
Numerator - Packs per outer box	6
Material Nr. (12NC)	913700752826
Net Weight (Piece)	1.910 kg

Dimensional drawing



Product	A1	A2	B1	C1	D1
BSN 150 L33-A2-TS 230V 50Hz	126 mm	108 mm	81 mm	66 mm	6.2 mm

BSN 150 L33-A2-TS 230V 50Hz

