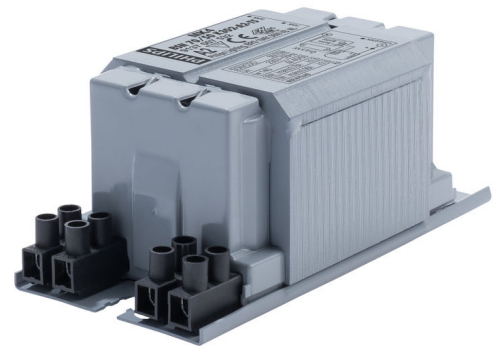


**PHILIPS**

Lighting



# HID-Basic BSN/BMH series multi-wattage for SON/CDO/CDM/MH/HPI

## BSN 70/50 K302-A2-TS 230V 50Hz

Impregnated electromagnetic copper/iron double-wattage ballasts for use with an external series (superimposed) ignitor for CDO, MH, HPI (Plus) and SON lamps

### Product data

General Information	
Application code	K302-A2-TS
Design	BC1-123
Lamp type	SON/CDO
Number of lamps	1 piece/unit

Operating and Electrical	
Input voltage	230 V
Input frequency	50 Hz
Power factor 100% load (nom.)	0.85
Mains voltage performance (AC)	-8%~+6%
Mains voltage safety (AC)	-10%~+10%
Input current with PF correction	70W@0.45A; 50W@0.3 A
Input current without PF Correction	70W@0.98 A; 50W@0.76 A

Power factor without PF compensation (nom.)	0.35
Power losses (nom.)	10.7W@70W;7.6W@50 W

Wiring	
Wire strip length	6.0 mm
Ballast contact wire cross section	2.5 mm <sup>2</sup>
Connector type	Screw

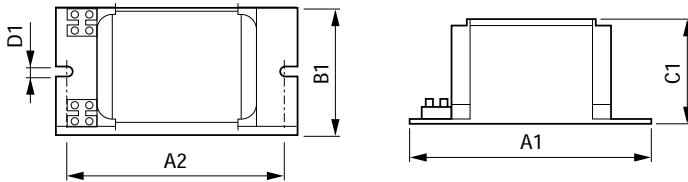
System characteristics	
Capacitor	12µF/250V
Rated ballast-lamp power	50/70 W
Recommended ignitor	for SON/CDO lamps ignitor only series digital SUD10 (913700195891)

## HID-Basic BSN/BMH series multi-wattage for SON/CDO/CDM/MH/HPI

Temperature	
T storage (max.)	130 °C
T storage (min.)	-30 °C
T winding (max.)	140 °C
Delta-T normal conditions	50/40 °C
Approval and Application	
Active temperature protection	Yes
Approval marks	CE marking ENEC certificate
Product Data	
Full product code	871869674110800

Order product name	BSN 70/50 K302-A2-TS 230V 50Hz
EAN/UPC – product	8718696741108
Order code	74110800
Numerator – quantity per pack	1
Numerator – packs per outer box	6
Material no. (12NC)	913700753226
Net weight (piece)	1.410 kg

### Dimensional drawing



Product	A1	A2	B1	C1	D1
BSN 70/50 K302-A2-TS 230V 50Hz	123 mm	98 mm	61 mm	52 mm	6.2 mm

BSN 70/50 K302-A2-TS 230V 50Hz

