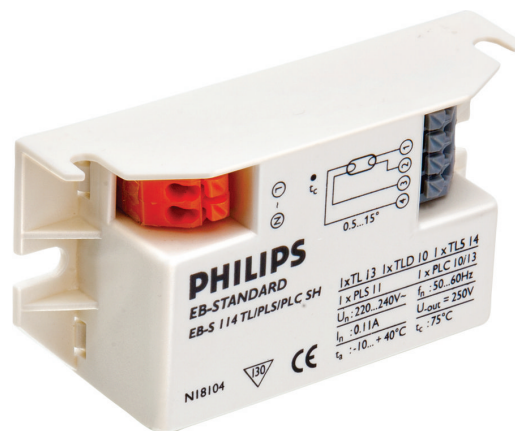


PHILIPS

Lighting



Micropower Electronic ballast for TL/PL-S/-T/-C lamps (India)

EBS 114 230 SH

Compact, lightweight, high-frequency electronic ballast designed for TL (6-18 W) and compact fluorescent PL (7-24 W) lamps

Product data

General Information	
Design	Square Housing
Lamp Type	TL/PL-S
Number of Lamps	1 piece/unit
Automatic Restart	Yes

Operating and Electrical	
Input Voltage	220 to 240 V
Input Frequency	50 to 60 Hz
Operating Frequency (Min)	42 kHz
Ignition Method	Warm Start
Crestfactor (Max)	1.85
Power Factor 100% Load (Nom)	0.6
Ignition Time (Max)	1 s
Mains Voltage Performance (AC)	221-254V
Mains Voltage Safety (AC)	216-264V
Constant Wattage Deviation	Not specified
Power Losses (Nom)	3.5 W

Wiring	
Connector Type Input Terminals	WAGO 251 universal connector [Suitable for both automatic wiring (ALF and ADS) and manual wiring]
Connector Type Output Terminals	WAGO 251 universal connector [Suitable for both automatic wiring (ALF and ADS) and manual wiring]
Wire Striplength	9.0-10.0 mm
Input Terminal Cross Section	0.50-1.50 mm ²
Output Terminal Cross Section	0.50-1.50 mm ²

System characteristics	
Rated Ballast-Lamp Power	14 W

Temperature	
T-Ambient (Max)	40 °C
T-Ambient (Min)	0 °C
T-Storage (Max)	85 °C
T-Storage (Min)	-40 °C
T-Case Maximum (Max)	75 °C
T-Ignition (Min)	0 °C

Micropower Electronic ballast for TL/PL-S/-T/-C lamps (India)

Emergency Operation

Battery Voltage Lamp Ignition	198-254 V
Battery Voltage Lamp Operation	176-254

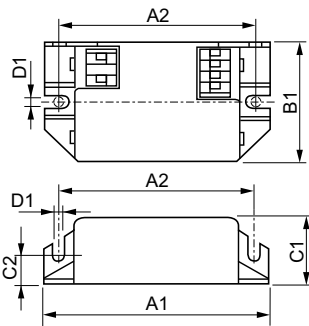
Approval and Application

EMC Immunity Standard	IEC 61547
Vibration Standard	-
Bumps Standard	Not specified
Humidity Standard	IEC 61347-2-3 clause 11
Hum And Noise Level	Inaudible

Product Data

Full product code	871150088496100
Order product name	EBS 114 230 SH
EAN/UPC - Product	8711500884961
Order code	913702243012
Numerator - Quantity Per Pack	1
Numerator - Packs per outer box	50
Material Nr. (12NC)	913702243012
Net Weight (Piece)	0.040 kg

Dimensional drawing



Product	D1	C1	A1	A2	B1
EBS 114 230 SH	4.0 mm	22.0 mm	80.0 mm	65.0 mm	40.0 mm

EB-S Micropower 114 220-240V SH

