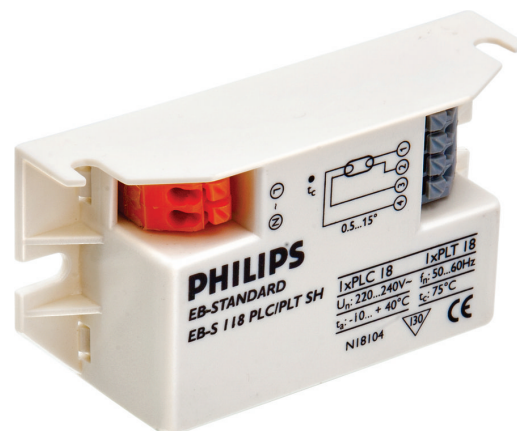


# PHILIPS

## Lighting



# Micropower Electronic ballast for TL/PL-S/-T/-C lamps (India)

## EBS 118 230 SH

Compact, lightweight, high-frequency electronic ballast designed for TL (6-18 W) and compact fluorescent PL (7-24 W) lamps

### Product data

General Information	
Design	Square Housing
Lamp Type	PL-T/C
Number of Lamps	1 piece/unit
Automatic Restart	Yes

Operating and Electrical	
Input Voltage	220 to 240 V
Input Frequency	50 to 60 Hz
Operating Frequency (Min)	42 kHz
Ignition Method	Warm Start
Crestfactor (Max)	1.85
Power Factor 100% Load (Nom)	0.6
Ignition Time (Max)	1 s
Mains Voltage Performance (AC)	221-254V
Mains Voltage Safety (AC)	216-264V
Constant Wattage Deviation	Not specified
Power Losses (Nom)	3.5 W

Wiring	
Connector Type Input Terminals	WAGO 251 universal connector [ Suitable for both automatic wiring (ALF and ADS) and manual wiring]
Connector Type Output Terminals	WAGO 251 universal connector [ Suitable for both automatic wiring (ALF and ADS) and manual wiring]
Wire Striplength	9.0-10.0 mm
Input Terminal Cross Section	0.50-1.50 mm <sup>2</sup>
Output Terminal Cross Section	0.50-1.50 mm <sup>2</sup>

System characteristics	
Rated Ballast-Lamp Power	18 W

Temperature	
T-Ambient (Max)	40 °C
T-Ambient (Min)	0 °C
T-Storage (Max)	85 °C
T-Storage (Min)	-40 °C
T-Case Maximum (Max)	75 °C
T-Ignition (Min)	0 °C

## Micropower Electronic ballast for TL/PL-S/-T/-C lamps (India)

### Emergency Operation

Battery Voltage Lamp Ignition	198-254 V
Battery Voltage Lamp Operation	176-254

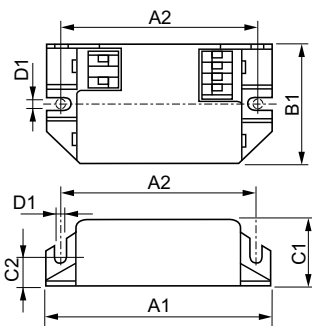
### Approval and Application

EMC Immunity Standard	IEC 61547
Vibration Standard	-
Bumps Standard	Not specified
Humidity Standard	IEC 61347-2-3 clause 11
Hum And Noise Level	Inaudible

### Product Data

Full product code	871150088497800
Order product name	EBS 118 230 SH
EAN/UPC - Product	8711500884978
Order code	913702243112
Numerator - Quantity Per Pack	1
Numerator - Packs per outer box	50
Material Nr. (12NC)	913702243112
Net Weight (Piece)	0.040 kg

### Dimensional drawing



Product	D1	C1	A1	A2	B1
EBS 118 230 SH	4.0 mm	22.0 mm	80.0 mm	65.0 mm	40.0 mm

EB-S Micropower 118 220-240V SH

