



Electronic series ignitor for HID lamp circuits

SU 50

HID ignitors for series systems

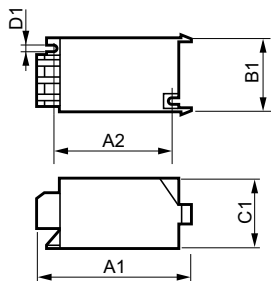
Product data

General Information	
Application code	50
Operating and Electrical	
Input voltage	220 to 240 V
Input frequency	50 to 60 Hz
Ignition type	Series
Ignition voltage (max.)	5.0 kV
Ignition voltage (min.)	4.0 kV
Response voltage	196 V
Mains voltage performance (AC)	-8%+6%
Mains voltage safety (AC)	-10%+10%
Power losses (nom.)	12 W
Wiring	
Ballast contact wire cross section	3.70-7.50 mm ²
Connector type	Screw
Temperature	
T ambient (max.)	55 °C

T-Case maximum (max.)	105 °C
Mechanical and Housing	
Housing	PC UL94V-2
Approval and Application	
Approval marks	Chia Quality Certificate CB Certificate
Product Data	
Full product code	697013372889500
Order product name	SU 50
EAN/UPC – product	6970133728895
Order code	913710011213
Numerator – quantity per pack	1
Numerator – packs per outer box	10
Material no. (12NC)	913710011213
Net weight (piece)	0.080 kg

Electronic series ignitor for HID lamp circuits

Dimensional drawing



Product	C1	A1	A2	B1	D1
SU 50	50 mm	90 mm	69 mm	55 mm	4.3 mm

SU 50

