

Mark 10 Powerline

MARK 10 POWERLINE ELE DIM BALLAST (2) 18W CFL (4-PIN) 120V

For companies looking to make their fixed-output linear T8, 4-pin CFL, and T5/HO fluorescent systems more cost effective and sustainable, Mark 10 Powerline ballasts provide an easy solution without the need for additional control leads. Simply, (1) replace the ballast, (2) replace the switch, (3) dim the lights, that is all it takes. It's that easy to bring the convenience and flexibility of fluorescent dimming to conference rooms, private offices, auditoriums, architectural cove lighting – anywhere dimming is required.

Product data

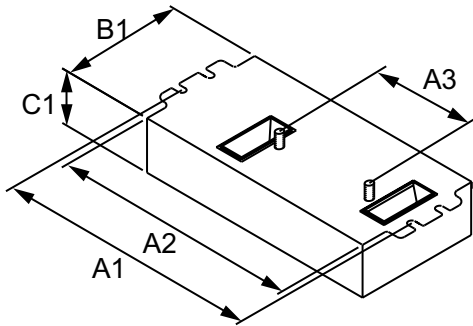
General Information		Input Power (Max)	43 W
Lamp Type	CFQ18W/G24Q	Input Power (Min)	14 W
Number of Lamps	2 piece/unit	Rated Lamp Watts	18 W
Ballast Type	Dimmable Fluorescent	Wiring	
Base Model	REZ2Q18M2BS	Color Input Terminals	BLK & WHT
Suitable For Outdoor Use	Yes	Color Output Terminals	RED, YEL & BLU
Automatic Restart	Yes	Wire Striplength	0.375 mm
Operating and Electrical		Control Wire Gauge	NA
Input Voltage	120 V	Lamp Connection	Series
Input Frequency	60 Hz	Wire Length by Color	No wires
Max THD	10 %	Wire Gauge (Nom)	18AWG mm
Starting Method	Programmed Start	Wire Type	Solid
Lamp Current Crest Factor (Nom)	1.6	Remote Wiring Configuration Allowed	No
Ignition Time (Nom)	1.5 s	Tandem Wiring Configuration Allowed	No
Ballast Factor (Max)	1	Through Wiring Configuration Allowed	No
Ballast Factor (Min)	0.05	Max Ballast-Lamp Distance Remote Wiring	No Remote
Power Factor (Nom)	0.99	Max Ballast-Lamp Distance Tandem Wiring	No Tandem
Input Current (Operating) (Nom)	0.36 A	Max Ballast-Lamp Distance Through Wiring	No Through

Mark 10 Powerline

Connector Type	Poke-In
Temperature	
T-Case Maximum (Nom)	70 °C
Mechanical and Housing	
Housing Material	Metal
Housing	M2
Housing Dimensions	4.98" x 3.0" x 1.29"
Approval and Application	
EMC Immunity Standard	FCC Consumer
Approbation Marks	CSA certificate UL certificate CEC Listing RoHS Compliant

Sound Rating	A
UL Recognized	No
Product Data	
Order product name	MARK 10 POWERLINE ELE DIM BALLAST (2) 18W CFL (4-PIN) 120V
EAN/UPC - Product	781087114919
Order code	REZ2Q18M2BS35M
Numerator - Quantity Per Pack	1
Numerator - Packs per outer box	16
Material Nr. (12NC)	913710231302
Net Weight (Piece)	314.000 g

Dimensional drawing



ELE DIM BALLAST (2) 18W CFL (4-PIN) 120V

Product	A1	A2	A3	B1	C1
MARK 10 POWERLINE REZ2Q18M2BS35M	4.55 in	4.20 in	2.00 in	3.00 in	1.29 in

