

Core & Coil (71A) MH ~LT~ 175W

**CORE & COIL HID MH BAL 150W M102/142 QUAD
C&C**

The basic ballast is the open core and coil which is most often used as a component within a lighting luminaire. The core and coil also forms the nucleus of Philips Advance's five other ballast configurations.

Product data

General Information	
ANSI Code	M102-M142
Lamp Type	150 MH
Number of Lamps	1 piece/unit
Circuit Type	SUPER-CWA
Ballast Type	Magnetic HID
Base Model	71A5493
Core Size	3 X 4 (2 coil)
Suitable For Outdoor Use	Yes
Ignitor Catalog Number	L1501-J4
Ignitor Temperature Rating	105°C
Capacitor Value	16 MFD
Capacitor Catalog Number	7C160M30RA
Capacitor Requirements	300V
Capacitor Temperature Rating	105°C
Capacitor Diameter/Oval	1.65 in
Dimensions	
Capacitor Height	2.75 in
Automatic Restart	No

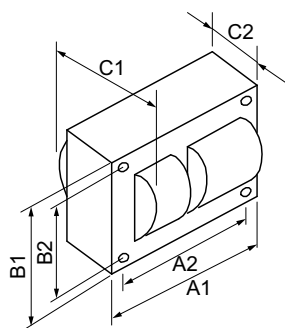
Operating and Electrical	
Input Voltage	120/208/240/277 V
Input Frequency	60 Hz
Input Current (Open Circuit)	1.98/1/0.95/0.81 A
Input Current (Starting)	0.7/0.39/0.37/0.31 A
Input Current (Short Circuit)	0.33-0.5/0.17-0.26/0.16-0.24/0.15-0.22 A
Secondary Short Circuit Current	1.9-2.35 A
Constant Wattage Deviation	10%
Ballast Factor (Nom)	1
Power Factor (Nom)	0.90
Open Circuit Voltage	217 V
Input Current (Nom)	1.64/0.92/0.85/0.73 A A
Input Power (Nom)	190 W
Rated Lamp Power	150 W
Wiring	
Wire Striplength	0.5 mm
Wire Length by Color	12"
Wire Type	Stranded

Core & Coil (71A) MH ~LT~ 175W

Remote Wiring Configuration	Yes
Allowed	
Max Ballast-Lamp Distance	5'
Remote Wiring	
Recommended Fuse Value	5/2.5/2/2 A
Approval and Application	
Open Circuit Voltage Test (Volts)	195-239 V
Approval Marks	ULR CSA certificate RoHS Compliant
Temperature Marking	D/C/D/C
UL Recognized	Yes
Hipot Test (1 Minute)	1500 V
Hipot Test (2 Seconds)	2500 V
UL Insulation Class	H(180°C)

UL Temperature Code	1029D
Product Data	
Order product name	CORE & COIL HID MH BAL 150W M102/142 QUAD C&C
EAN/UPC - Product	781087075470
Order code	913710676002
Numerator - Quantity Per Pack	1
Numerator - Packs per outer box	4
Material Nr. (12NC)	913710676002
Net Weight (Piece)	3.570 kg

Dimensional drawing



MH BAL 150W M102/142 QUAD C&C

Product	C1	C2	A1	A2	B1	B2
CORE & COIL HID 71A5493500D	3.75 in	2.40 in	3.9 in	3.5 in	2.8 in	2.4 in

