



HF-Essential II for TL5/TL-D

HF-E 114 TL5 II 220-240V 50/60Hz

Essentially smart and reliable. HF-Essential II is the most cost-effective solution for reliably operation of a fluorescent lamp. It is also the ideal entry-level product for electromagnetic system users who want to take advantage of the benefits provided by electronic ballasts. The cost-saving and reliable HF-Essential II is energy efficiency class A2, and its robust design meets all relevant international safety and performance standards. HF- Essential II is the ideal choice for a broad range of new construction and retrofit applications within the commercial sector, including general surface mounting and office lighting, parking garages, warehouses and other applications.

Product data

Operating and Electrical	
Input Voltage	220 to 240 V
Line Frequency	50 to 60 Hz
Input Frequency	50 to 60 Hz
Earth Leakage Current (Max)	0.5 mA
Inrush Current Width	0.18 ms
Inrush Current Peak (Max)	7.55 A
Number of Products on MCB (16A Type B) (Nom)	80
Wiring	
Connector Type Input Terminals	Insert
Connector Type Output Terminals	Insert
Temperature	
Ambient temperature range	0 °C to 50 °C

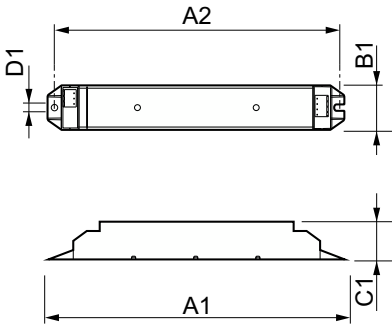
T-Case Lifetime (Nom)	75 °C
T-Case Maximum (Max)	75 °C
Mechanical and Housing	
Housing	L 280x29.3x22.7
Approval and Application	
Ingress protection code	IP20 [Finger-protected]
Energy Efficiency Index	A2
Approval Marks	CE marking KEMA Keur certificate RoHS Compliant
Product Data	
Order product name	HF-E 114 TL5 II 220-240V 50/60Hz
Full product name	HF-E 114 TL5 II 220-240V 50/60Hz
Full product code	871869641697600

HF-Essential II for TL5/TL-D

Order code	41697600
Material Nr. (12NC)	913713041466
Numerator - Quantity Per Pack	1
EAN/UPC - Product/Case	8718696416976

Numerator - Packs per outer box	50
EAN/UPC - Case	8718696416983

Dimensional drawing



Product	D1	C1	A1	A2	B1
HF-E 114 TL5 II 220-240V 50/60Hz	1.2 mm	22.7 mm	280.0 mm	270.0 mm	29.3 mm

