



HF-Selectalume II for TL5 lamps

HF-S 114-35 TL5 II 220-240V 50/60Hz

HF-Selectalume II TL5 is the most cost-effective, reliable and outstanding solution for fluorescent lamps. These ballasts are part of an overall high-efficiency lighting system that may help you or your customers to achieve any international or local energy code you need to comply with. HF-Selectalume II TL5 ballasts are the ideal choice for a broad range of new construction and retrofit applications within the commercial sector, including general surface mounting or office lighting, parking garages, warehouses, waterproof and other applications.

Product data

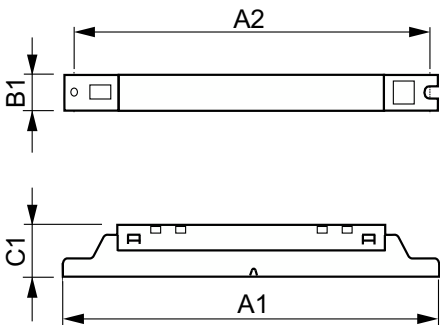
Operating and Electrical		T-Case Maximum (Max)		75 °C
Input Voltage	220 to 240 V			
Line Frequency	50 to 60 Hz	Mechanical and Housing		
Input Frequency	50 to 60 Hz	Housing	L360x30x22	
Earth Leakage Current (Max)	0.5 mA			
Inrush Current Width	0.25 ms	Approval and Application		
Inrush Current Peak (Max)	24 A	Ingress protection code	IP20 [Finger-protected]	
Number of Products on MCB (16A Type B) (Nom)	28	Energy Efficiency Index	A2 BAT	
		Approval Marks	CE marking ENEC certificate CCC certificate C-Tick certificate TISI marking SIRIM approval CCC certificate	
Wiring				
Connector Type Input Terminals	WAGO 744 connector			
Connector Type Output Terminals	WAGO 744 connector [Suitable for manual wiring]	Product Data		
		Order product name	HF-S 114-35 TL5 HE II 220-240V	
		Full product name	HF-S 114-35 TL5 II 220-240V 50/60Hz	
		Full product code	871829175842600	
		Order code	75842600	
		Material Nr. (12NC)	913713042066	
Temperature				
Ambient temperature range	-20 °C to 55 °C			
T-Case Lifetime (Nom)	75 °C			

HF-Selectalume II for TL5 lamps

Numerator - Quantity Per Pack	1
EAN/UPC - Product/Case	8718291758426
Numerator - Packs per outer box	12

EAN/UPC - Case	8718291758433
----------------	---------------

Dimensional drawing



Product	D1	C1	A1	A2	B1
HF-S 114-35 TL5 HE II 220-240V	4.2 mm	22.0 mm	360.0 mm	350.0 mm	30.0 mm

