



HF-Selectalume II for TL5 lamps

HF-S 114-35 TL5 II 220-240V 50/60Hz

HF-Selectalume II is the most cost-effective, reliable, slim and affordable fluorescent solution, with highly disruptive technology for energy saving, system flexibility and unsurpassed performance. The cost-saving HF-Selectalume II has a robust design which meets all relevant international safety and performance standards. HF-Selectalume II is intended for use with indoor lighting fixtures such as spotlights, downlights and recessed luminaires, which are largely used in office, retail, industry, hotel, restaurant and other applications where control devices are installed with occasional On/Off switching activity

Product data

Operating and Electrical	
Input Voltage	220 to 240 V
Line Frequency	50 to 60 Hz
Input frequency	50 to 60 Hz
Earth leakage current (max.)	0.5 mA
Inrush current width	0.25 ms
Inrush current peak (max.)	24 A
Number of products on MCB (16 A type B) (nom.)	28
Wiring	
Connector type input terminals	WAGO 744 connector
Connector type output terminals	WAGO 744 connector [Suitable for manual wiring]
Temperature	
Ambient temperature range	-20°C to 55°C

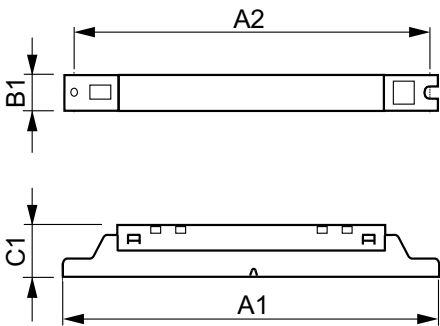
T-case lifetime (nom.)	75 °C
T-Case maximum (max.)	75 °C
Mechanical and Housing	
Housing	L360x30x22
Approval and Application	
Ingress protection code	IP20 [Finger-protected]
Energy efficiency index	A2 BAT
Approval marks	CE marking ENEC certificate CCC certificate C-Tick certificate TISI marking SIRIM approval CCC certificate
Product Data	
Order product name	HF-S 114-35 TL5 HE II 220-240V
Full product name	HF-S 114-35 TL5 II 220-240V 50/60Hz
Full EOC	871829175842600

HF-Selectalume II for TL5 lamps

Order code	75842600
Material no. (12 NC)	913713042066
Local order code	HFS11435TL5HEII
SAP numerator – quantity per pack	1
EAN/UPC – Product/Case	8718291758426

Numerator – packs per outer box	12
EAN/UPC – Case	8718291758433

Dimensional drawing



Product	D1	C1	A1	A2	B1
HF-S 114-35 TL5 HE II 220-240V	4.2 mm	22.0 mm	360.0 mm	350.0 mm	30.0 mm

