



HF-Selectalume II for TL5 lamps

HF-S 1 14-35 TL5 HE II 220-240V

HF-Selectalume II is the most cost-effective, reliable, slim and affordable fluorescent solution, with highly disruptive technology for energy saving, system flexibility and unsurpassed performance. The cost-saving HF-Selectalume II has a robust design which meets all relevant international safety and performance standards. HF-Selectalume II is intended for use with indoor lighting fixtures such as spotlights, downlights and recessed luminaires, which are largely used in office, retail, industry, hotel, restaurant and other applications where control devices are installed with occasional On/Off switching activity

Product data

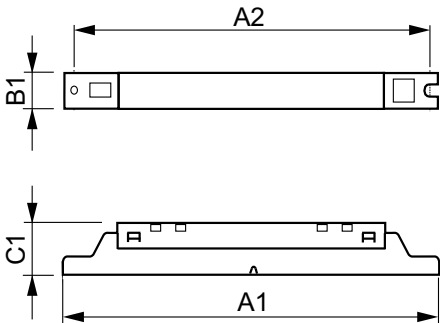
| Operating and Electrical | | T-Case Lifetime (Nom) | |
|--|---|--------------------------|--|
| Input Voltage | 220 to 240 V | 75 °C | |
| Line Frequency | 50 to 60 Hz | T-Case Maximum (Max) | |
| Input Frequency | 50 to 60 Hz | 75 °C | |
| Earth Leakage Current (Max) | 0.5 mA | Mechanical and Housing | |
| Inrush Current Width | 0.25 ms | Housing | L360x30x22 |
| Inrush Current Peak (Max) | 24 A | Approval and Application | |
| Number of Products on MCB (16A Type B) (Nom) | 28 | Ingress protection code | IP20 [Finger-protected] |
| Wiring | | Energy Efficiency Index | A2 BAT |
| Connector Type Input Terminals | WAGO 744 connector | Approval Marks | CE marking ENEC certificate CCC certificate C-Tick certificate TISI marking SIRIM approval CCC certificate |
| Connector Type Output Terminals | WAGO 744 connector [Suitable for manual wiring] | Product Data | |
| Temperature | | Order product name | HF-S 1 14-35 TL5 HE II 220-240V |
| Ambient temperature range | -20 °C to 55 °C | Full product name | HF-S 1 14-35 TL5 HE II 220-240V |
| | | Full product code | 871829175842600 |

HF-Selectalume II for TL5 lamps

| | |
|-------------------------------|---------------|
| Order code | 913713042066 |
| Material Nr. (12NC) | 913713042066 |
| Numerator - Quantity Per Pack | 1 |
| EAN/UPC - Product/Case | 8718291758426 |

| | |
|---------------------------------|---------------|
| Numerator - Packs per outer box | 12 |
| EAN/UPC - Case | 8718291758433 |

Dimensional drawing



| Product | D1 | C1 | A1 | A2 | B1 |
|--------------------------------|--------|---------|----------|----------|---------|
| HF-S 114-35 TL5 HE II 220-240V | 4.2 mm | 22.0 mm | 360.0 mm | 350.0 mm | 30.0 mm |

