



# HF-Selectalume II for TL5 lamps

## HF-S 214-35 TL5 II 220-240V 50/60Hz

HF-Selectalume II TL5 is the most cost-effective, reliable and outstanding solution for fluorescent lamps. These ballasts are part of an overall high-efficiency lighting system that may help you or your customers to achieve any international or local energy code you need to comply with. HF-Selectalume II TL5 ballasts are the ideal choice for a broad range of new construction and retrofit applications within the commercial sector, including general surface mounting or office lighting, parking garages, warehouses, waterproof and other applications.

### Product data

| Operating and Electrical                     |   |
|--|---|
| Input Voltage                                | 220 to 240 V                                    |
| Line Frequency                               | 50 to 60 Hz                                     |
| Input Frequency                              | 50 to 60 Hz                                     |
| Earth Leakage Current (Max)                  | 0.5 mA  |
| Inrush Current Width                         | 0.25 ms   |
| Inrush Current Peak (Max)                    | 24 A  |
| Number of Products on MCB (16A Type B) (Nom) | 28  |
| Wiring                                       |   |
| Connector Type Input Terminals               | WAGO 744 connector                              |
| Connector Type Output Terminals              | WAGO 744 connector [Suitable for manual wiring] |
| Temperature                                  |   |
| Ambient temperature range                    | -20 °C to 55 °C                                 |
| T-Case Lifetime (Nom)                        | 75 °C   |

| T-Case Maximum (Max)     | 75 °C  |
|--------------------------|--|
| Mechanical and Housing   |  |
| Housing                  | L360x30x22   |
| Approval and Application |  |
| Ingress protection code  | IP20 [Finger-protected]  |
| Energy Efficiency Index  | A2 BAT   |
| Approval Marks           | CE marking ENEC certificate CCC certificate<br>C-Tick certificate TISI marking SIRIM approval<br>CCC certificate |

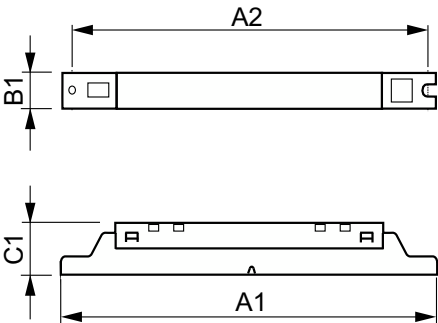
| Product Data        |                                     |
|---------------------|-------------------------------------|
| Order product name  | HF-S 2 14-35 TL5 HE II 220-240V     |
| Full product name   | HF-S 214-35 TL5 II 220-240V 50/60Hz |
| Full product code   | 871829175844000                     |
| Order code          | 75844000                            |
| Material Nr. (12NC) | 913713042166                        |

# HF-Selectalume II for TL5 lamps

|                                 |               |
|---------------------------------|---------------|
| Numerator - Quantity Per Pack   | 1             |
| EAN/UPC - Product/Case          | 8718291758440 |
| Numerator - Packs per outer box | 12            |

|                |               |
|----------------|---------------|
| EAN/UPC - Case | 8718291758457 |
|----------------|---------------|

## Dimensional drawing



| Product                         | D1     | C1      | A1       | A2       | B1      |
|---------------------------------|--------|---------|----------|----------|---------|
| HF-S 2 14-35 TL5 HE II 220-240V | 4.2 mm | 22.0 mm | 360.0 mm | 350.0 mm | 30.0 mm |

