

# HF-Selectalume II for TL5 lamps

## HF-S 2 14-35 TL5 HE II 220-240V

HF-Selectalume II TL5 is the most cost-effective, reliable and outstanding solution for fluorescent lamps. These ballasts are part of an overall high-efficiency lighting system that may help you or your customers to achieve any international or local energy code you need to comply with. HF-Selectalume II TL5 ballasts are the ideal choice for a broad range of new construction and retrofit applications within the commercial sector, including general surface mounting or office lighting, parking garages, warehouses, waterproof and other applications. The ballast is primarily designed for Indoor application. For outdoor application, the luminaire should be minimum Classland need to be sufficiently protected against water & dust. The installation should also be guard against any lightening surge or any other necessary electrical protection as deemed in such typical installation & application.

### Product data

General Information		Electrical	
Application Code	HE II	Power Factor 100% Load (Nom)	0.99
Type Version	-	Preheat Time	0.5 s
Lamp Type	TL5	Mains Voltage Performance (AC)	202-254V-8%~+6%
Number of Lamps	2 piece/unit	Mains Voltage Safety (AC)	198-264V-10%~+10%
Number of Products on MCB (16A Type B) (Nom)	28	Earth Leakage Current (Max)	0.5 mA
Automatic Restart	Yes	Inrush Current Width	0.25 ms
		Ballast Factor (Nom)	1
		Power Losses (Nom)	2.0-5.5 W
		Inrush Current Peak (Max)	24 A
Operating and Electrical		Wiring	
Input Voltage	220 to 240 V	Connector Type Input Terminals	WAGO 744 connector
Input Frequency	50 to 60 Hz	Cable Capacity Output Wires Mutual (Max)	200 pF
Operating Frequency (Nom)	45 kHz		
Crestfactor (Nom)	1.7		

## HF-Selectalume II for TL5 lamps

Connector Type Output Terminals	WAGO 744 connector [ Suitable for manual wiring]
Cable Length Hot Wiring	0.75 m
Wire Striplength	8.0-9.0 mm
Dual Fixture Master/Slave	Possible, lamp wires 2m max. length [ Master/Slave operation possible]
Input Terminal Cross Section	0.50-1.00 mm <sup>2</sup>
Output Terminal Cross Section	0.50-1.00 mm <sup>2</sup>
Cable Capacity Cold Output Wires - Earth (Max)	200 pF
Cable Capacity Hot Output Wires - Earth (Max)	200 pF

### System characteristics

Rated Ballast-Lamp Power	14-35 W
Rated Lamp Power on TL5 HE	14/35 W
System Power on TL5 HE	30.5/76.5 W
Lamp Power on TL5 HE	28.5/71.0 W
Power Loss on TL5 HE	2.0/5.5 W

### Temperature

T-Ambient (Max)	55 °C
T-Ambient (Min)	-20 °C
T-Storage (Max)	50 °C
T-Storage (Min)	-40 °C
T-Case Lifetime (Nom)	75 °C
T-Case Maximum (Max)	75 °C

### Mechanical and Housing

Housing	L360x30x22
---------	------------

### Emergency Operation

Nominal Light Output After 60 Seconds	100% of EBLF
Normal Operating Voltage (DC)	220-240 V
Battery Voltage Guaranteed Operation	176-275 V
Battery Voltage Guaranteed Ignition	186-275 V
Emergency Ballast Lumen Factor (EBLF) (Nom)	100 %
Nominal Light Output After 5 Seconds	50% of EBLF

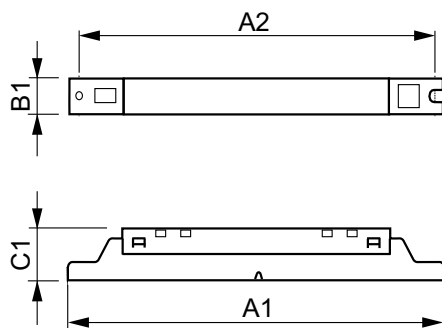
### Approval and Application

Energy Efficiency Index	A2 BAT
IP Classification	IP 20 [ Ingress Protection 20]
EMI 9 kHz ... 30 MHz	EN55015
Vibration Standard	IEC68-2-6 F c
Bumps Standard	IEC 68-2-29 Eb
Approval Marks	CE marking ENEC certificate CCC certificate C-Tick certificate TISI marking SIRIM approval CCC certificate
Hum And Noise Level	30 dB(A)

### Product Data

Full product code	871829175844000
Order product name	HF-S 2 14-35 TL5 HE II 220-240V
EAN/UPC - Product	8718291758440
Order code	913713042166
Numerator - Quantity Per Pack	1
Numerator - Packs per outer box	12
Material Nr. (12NC)	913713042166
Net Weight (Piece)	0.245 kg

### Dimensional drawing



HF-S 2 14-35 TL5 HE II 220-240V 50/60Hz

Product	D1	C1	A1	A2	B1
HF-S 2 14-35 TL5 HE II 220-240V	4.2 mm	22.0 mm	360.0 mm	350.0 mm	30.0 mm

## HF-Selectalume II for TL5 lamps

