

HID-Basic Semi-Parallel ballasts for MHN/CDM lamps

BMH 35L 300I TS

The HID Basic Semi-Parallel ballast is an impregnated (HID standard) electromagnetic copper/iron ballast for use with an external ignitor for metal-halide and CDM lamps.

Product data

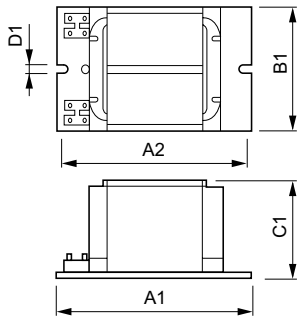
General Information	
Application Code	L300 ITS
Operating and Electrical	
Input Voltage	220 V
Input Frequency	50 Hz
Power Factor 100% Load (Min)	0.85
Mains Voltage Performance (AC)	-8% - +6%
Mains Voltage Safety (AC)	-10% - +10%
Input Current with PF Correction	0.24 A
Input Current without PF Correction	0.53 A
Power Factor without PF Compensation (Nom)	0.40
Power Losses (Nom)	7.4 W
Wiring	
Connector Type	Screw

System characteristics	
Rated Ballast-Lamp Power	35 W
Temperature	
T-Winding (Max)	130 °C
Delta-T Normal Conditions	55 °C
Approval and Application	
Approval Marks	CE marking ENEC certificate CCC certificate
Product Data	
Full product code	872790006508400
Order product name	BMH 35L 300I TS
EAN/UPC - Product	6948182295903
Order code	913713200567
Numerator - Quantity Per Pack	1
Numerator - Packs per outer box	6
Material Nr. (12NC)	913713200567

HID-Basic Semi-Parallel ballasts for MHN/CDM lamps

Net Weight (Piece) 0.800 kg

Dimensional drawing



Product	D1	C1	A1	A2	B1
BMH 35L 300I TS	6.2 mm	51.5 mm	117.0 mm	102.0 mm	57.1 mm

BMH 35 L300 ITS

