



Plusline ES Small

Plusline 118mm 2y 400W R7s 230V 1BB

Mains-voltage halogen linear lamp with superior quality and reliability. Offers very long lifetime and crisp halogen light. Ideal solution for decorative luminaires and for security or task lighting floodlights.

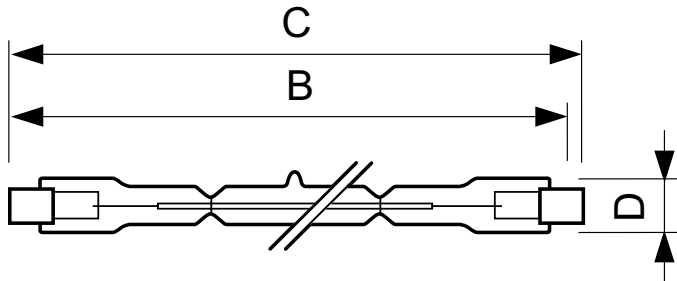
Product data

General Information	
Cap-Base	R7S [R7s]
Operating Position	UNIVERSAL [Any or Universal (U)]
Nominal Lifetime (Nom)	2000 h
Switching Cycle	8000X
Light Technical	
Luminous Flux (Nom)	8600 lm
Luminous Flux (Rated) (Nom)	8600 lm
Colour Temperature, horizontal (Nom)	2900 K
Luminous Efficacy (rated) (Nom)	21.5 lm/W
Colour Rendering Index horiz (Nom)	100
LLMF at End of Nominal Lifetime (Min)	80 %
Operating and Electrical	
Power (Rated) (Nom)	400.0 W
Lamp Current (Nom)	1.74 A
Wattage Equivalent	500 W
Starting Time (Nom)	0.0 s
Warm Up Time to 60% Light (Nom)	instant full light
Power Factor (Nom)	1
Voltage (Nom)	230 V

Controls and Dimming	
Dimmable	Yes
Mechanical and Housing	
Bulb Finish	Clear (CL)
Approval and Application	
Energy Efficiency Label	D
Energy Consumption kWh/1000 h	400 kWh
Luminaire Design Requirements	
Bulb Temperature (Max)	900 °C
Pinch Temperature (Max)	350 °C
Product Data	
Full product code	872790085389600
Order product name	Plusline 118mm 2y 400W R7s 230V 1BB
EAN/UPC - Product	8727900853896
Order code	85389600
Numerator - Quantity Per Pack	1
Numerator - Packs per outer box	100
Material Nr. (12NC)	924572144210
Net Weight (Piece)	9.000 g
ILCOS Code	HDG//RS-400-230-R7s-114.2

Plusline ES Small

Dimensional drawing



Product	D (max)	B (max)	B	B (min)	C (max)
Plusline 118mm 2y 400W R7s	11 mm	115.8 mm	114.2 mm	112.6 mm	118 mm
230V 1BB					

DESmall 118mm 2y 400W R7s 230V T11 CL

