



Plusline ES Small

Plusline 118mm 2y 160W R7s 230V 1BB

Mains-voltage halogen linear lamp with superior quality and reliability. Offers very long lifetime and crisp halogen light. Ideal solution for decorative luminaires and for security or task lighting floodlights.

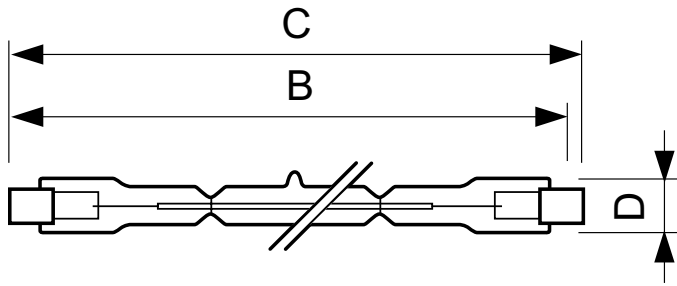
Product data

| General Information | |
|---------------------------------------|-----------------------------------|
| Cap-Base | R7S [R7s] |
| Operating Position | UNIVERSAL [Any or Universal (U)] |
| Nominal Lifetime (Nom) | 2000 h |
| Switching Cycle | 8000X |
| Light Technical | |
| Luminous Flux (Nom) | 3100 lm |
| Luminous Flux (Rated) (Nom) | 3100 lm |
| Colour Temperature, horizontal (Nom) | 2900 K |
| Luminous Efficacy (rated) (Nom) | 19.4 lm/W |
| Colour Rendering Index horiz (Nom) | 100 |
| LLMF at End of Nominal Lifetime (Min) | 80 % |
| Operating and Electrical | |
| Power (Rated) (Nom) | 160.0 W |
| Lamp Current (Nom) | 0.70 A |
| Wattage Equivalent | 200 W |
| Starting Time (Nom) | 0.0 s |
| Warm Up Time to 60% Light (Nom) | instant full light |
| Power Factor (Nom) | 1 |
| Voltage (Nom) | 230 V |
| Controls and Dimming | |
| Dimmable | Yes |

| Mechanical and Housing | |
|---------------------------------|-------------------------------------|
| Bulb Finish | Clear (CL) |
| Approval and Application | |
| Energy Efficiency Label | D |
| Energy Consumption kWh/1000 h | 160 kWh |
| Luminaire Design Requirements | |
| Bulb Temperature (Max) | 900 °C |
| Pinch Temperature (Max) | 350 °C |
| Product Data | |
| Full product code | 872790085219600 |
| Order product name | Plusline 118mm 2y 160W R7s 230V 1BB |
| EAN/UPC - Product | 8727900852196 |
| Order code | 85219600 |
| Numerator - Quantity Per Pack | 1 |
| Numerator - Packs per outer box | 100 |
| Material Nr. (12NC) | 924587544210 |
| Net Weight (Piece) | 9.000 g |

Plusline ES Small

Dimensional drawing



| Product | D (max) | B (max) | B | B (min) | C (max) |
|----------------------------|---------|----------|----------|----------|---------|
| Plusline 118mm 2y 160W R7s | 11 mm | 115.8 mm | 114.2 mm | 112.6 mm | 118 mm |
| 230V 1BB | | | | | |

DESmall 118mm 2y 160W R7s 230V T11 CL

