



Double Ended Linear

300T3Q/CL 120V 12PK

High-quality white light with superior lumen performance. Halogen Double Ended lamps provide bright, white light for work lights and security lighting. Rugged construction for busy work sites. Offered in several lengths to meet most application needs. High lumen output provides light where you need it.

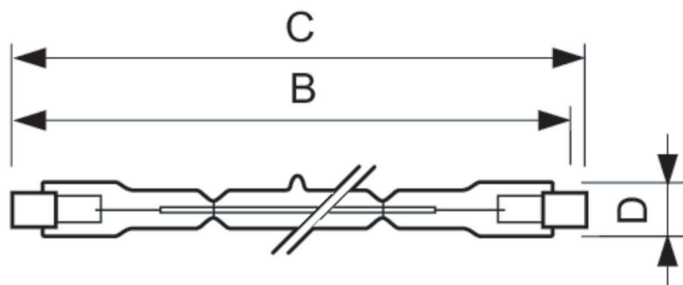
Product data

General Information	
Cap-Base	R7S [R7s]
Operating Position	UNIVERSAL [Any or Universal (U)]
Nominal lifetime	2,000 hour(s)
Rated Lifetime (Hours)	2,000 hour(s)
Lighting Technology	Halogen
Light Technical	
Luminous Flux	5,200 lumen
Luminous Efficacy (rated) (Nom)	17.3 lm/W
Operating and Electrical	
Power Consumption	300 W
Lamp Current (Nom)	2.50 A
Starting Time (Nom)	0.0 s
Voltage (Nom)	120 V
Voltage (Nom)	120 V

Mechanical and Housing	
Bulb Finish	Clear
Bulb Shape	T3 [T 12mm (T3)]
Product Data	
Order product name	300T3Q/CL 120V 12PK
Order code	924735234593
Numerator - Quantity Per Pack	1
Numerator - Packs per outer box	12
Material Nr. (12NC)	924735234593
Full product name	300T3Q/CL 120V 12PK
EAN/UPC - Case	50046677392821
EAN/UPC - Product/Case	046677392826

Double Ended Linear

Dimensional drawing



Product	D (max)	B (max)	B	B (min)	C (max)
300T3Q/CL 120V 12PK	12 mm	115.8 mm	114.2 mm	112.6 mm	117.6 mm

