



Double Ended Linear

BC500T3Q/CL/2CD/TP

High-quality white light with superior lumen performance. Halogen Double Ended lamps provide bright, white light for work lights and security lighting. Rugged construction for busy work sites. Offered in several lengths to meet most application needs. High lumen output provides light where you need it.

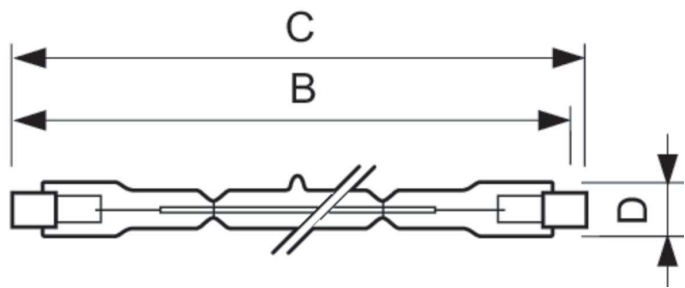
Product data

General Information	
Cap-Base	R7S [R7s]
Operating Position	UNIVERSAL [Any or Universal (U)]
Nominal lifetime	2,000 hour(s)
Rated Lifetime (Hours)	2,000 hour(s)
Lighting Technology	Halogen
Light Technical	
Luminous Flux	9,500 lm
Correlated Color Temperature (Nom)	2900 K
Luminous Efficacy (rated) (Nom)	19.0 lm/W
Color rendering index (CRI)	100
Operating and Electrical	
Power Consumption	500 W
Lamp Current (Nom)	4.17 A
Starting Time (Nom)	0.0 s
Voltage (Nom)	120 V
Voltage (Nom)	120 V

Controls and Dimming	
Dimmable	Yes
Mechanical and Housing	
Bulb Finish	Clear
Bulb Shape	T3 [T 12mm (T3)]
Product Data	
Order product name	BC500T3Q/CL/2CD/TP
Full product name	BC500T3Q/CL/2CD/TP
Order code	924735334596
Material Nr. (12NC)	924735334596
Numerator - Quantity Per Pack	1
EAN/UPC - Product/Case	067805011846
Numerator - Packs per outer box	12
EAN/UPC - Case	50067805011841

Double Ended Linear

Dimensional drawing



Product	D (max)	B (max)	B	B (min)	C (max)
BC500T3Q/CL/2CD/TP	12 mm	115.8 mm	114.2 mm	112.6 mm	117.6 mm

