



# Double Ended Linear

## Double Ended Linear BC300T3Q/CL 130V 6/2

High-quality white light with superior lumen performance Halogen Double Ended lamps provide bright, white light for work lights and security lighting. Rugged construction for busy work sites. Offered in several lengths to meet most application needs. High lumen output provides light where you need it.

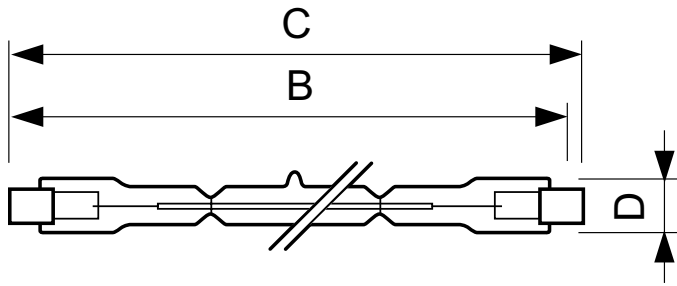
### Product data

General Information	
Base	R7S [ R7s]
Operating Position	Universal [ Universal]
Nominal Lifetime (Nom)	2000 h
Light Technical	
Initial lumen (Nom)	4600 lm
Correlated Color Temperature (Nom)	2900 K
Luminous Efficacy (rated) (Nom)	15.3 lm/W
Color Rendering Index (Nom)	100
Operating and Electrical	
Power (Rated) (Nom)	300 W
Lamp Current (Nom)	2.31 A
Starting Time (Nom)	0.0 s
Voltage (Nom)	130 V
Controls and Dimming	
Dimmable	Yes

Mechanical and Housing	
Bulb Finish	Clear (CL)
Approval and Application	
Energy Efficiency Label (EEL)	E
Luminaire Design Requirements	
Bulb Temperature (Max)	900 °C
Pinch Temperature (Max)	350 °C
Product Data	
Order product name	Double Ended Linear BC300T3Q/CL 130V 6/2
EAN/UPC - Product	50046677415698
Order code	415695
Numerator - Quantity Per Pack	1
Numerator - Packs per outer box	6
Material Nr. (12NC)	924735436102
Net Weight (Piece)	0.009 kg

## Double Ended Linear

### Dimensional drawing



Product	D (max)	B (max)	B	B (min)	C (max)
Double Ended Linear	12 mm	115.8 mm	114.2 mm	112.6 mm	117.6 mm
BC300T3Q/CL 130V 6/2					

DESmall 300W R7s 130V

