



Double Ended Linear

Double Ended Linear BC300T3Q/CL 130V 6/2

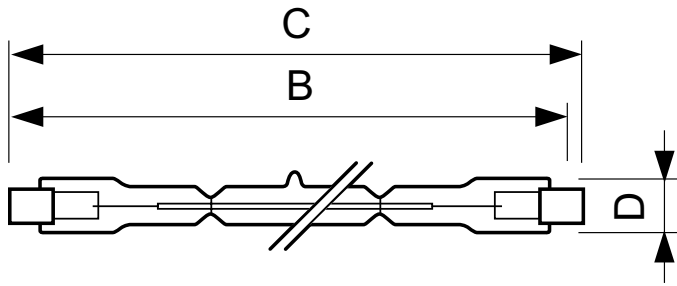
High-quality white light with superior lumen performance Halogen Double Ended lamps provide bright, white light for work lights and security lighting. Rugged construction for busy work sites. Offered in several lengths to meet most application needs. High lumen output provides light where you need it.

Product data

General Information		Mechanical and Housing	
Cap-Base	R7S [R7s]	Bulb Finish	Clear
Operating Position	UNIVERSAL [Any or Universal (U)]		
Nominal Lifetime (Nom)	2000 h		
Light Technical		Approval and Application	
Luminous Flux (Nom)	4600 lm	Energy Efficiency Label (EEL)	E
Correlated Color Temperature (Nom)	2900 K		
Luminous Efficacy (rated) (Nom)	15.3 lm/W		
Color Rendering Index (Nom)	100		
Operating and Electrical		Luminaire Design Requirements	
Power (Rated) (Nom)	300 W	Bulb Temperature (Max)	900 °C
Lamp Current (Nom)	2.31 A	Pinch Temperature (Max)	350 °C
Starting Time (Nom)	0.0 s		
Voltage (Nom)	130 V		
Controls and Dimming		Product Data	
Dimmable	Yes	Order product name	Double Ended Linear BC300T3Q/CL 130V 6/2
		EAN/UPC - Product	50046677415698
		Order code	924735436102
		Numerator - Quantity Per Pack	1
		Numerator - Packs per outer box	6
		Material Nr. (12NC)	924735436102
		Net Weight (Piece)	0.009 kg

Double Ended Linear

Dimensional drawing



Product	D (max)	B (max)	B	B (min)	C (max)
Double Ended Linear	12 mm	115.8 mm	114.2 mm	112.6 mm	117.6 mm
BC300T3Q/CL 130V 6/2					

DESmall 300W R7s 130V

