



# Double Ended Linear

## Double Ended Linear BC100T3Q/CL 12/1

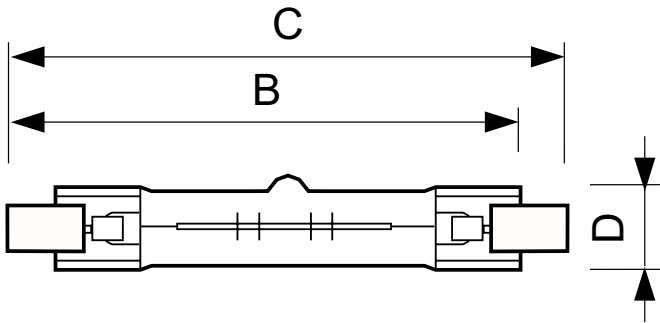
High-quality white light with superior lumen performance Halogen Double Ended lamps provide bright, white light for work lights and security lighting. Rugged construction for busy work sites. Offered in several lengths to meet most application needs. High lumen output provides light where you need it.

### Product data

| General Information                |                                   | Cap-Base Information            |                                      |
|------------------------------------|-----------------------------------|---------------------------------|--------------------------------------|
| Cap-Base                           | R7S [ R7s]                        | Cap-Base Information            | -                                    |
| Operating Position                 | UNIVERSAL [ Any or Universal (U)] | Approval and Application        |                                      |
| Nominal Lifetime (Nom)             | 2000 h                            | Energy Efficiency Label (EEL)   | E                                    |
| Light Technical                    |                                   | Luminaire Design Requirements   |                                      |
| Luminous Flux (Nom)                | 1400 lm                           | Bulb Temperature (Max)          | 900 °C                               |
| Correlated Color Temperature (Nom) | 2900 K                            | Pinch Temperature (Max)         | 350 °C                               |
| Luminous Efficacy (rated) (Nom)    | 14 lm/W                           | Product Data                    |                                      |
| Color Rendering Index (Nom)        | 100                               | Order product name              | Double Ended Linear BC100T3Q/CL 12/1 |
| Operating and Electrical           |                                   | EAN/UPC - Product               | 046677415600                         |
| Power (Rated) (Nom)                | 100 W                             | Order code                      | 924884636301                         |
| Lamp Current (Nom)                 | 0.83 A                            | Numerator - Quantity Per Pack   | 1                                    |
| Starting Time (Nom)                | 0.0 s                             | Numerator - Packs per outer box | 12                                   |
| Voltage (Nom)                      | 120 V                             | Material Nr. (12NC)             | 924884636301                         |
| Controls and Dimming               |                                   | Net Weight (Piece)              | 0.006 kg                             |
| Dimmable                           | Yes                               | Mechanical and Housing          |                                      |
| Mechanical and Housing             |                                   | Bulb Finish                     | Clear                                |

## Double Ended Linear

### Dimensional drawing



| Product                                 | D (max) | B (max) | B       | B (min) | C (max) |
|-----------------------------------------|---------|---------|---------|---------|---------|
| Double Ended Linear<br>BC100T3Q/CL 12/1 | 12 mm   | 76.5 mm | 74.9 mm | 73.3 mm | 78.3 mm |

DEComp 100W R7s 120V T3 CL

