



High Output T12

F96T12/CW/HO-O ALTO 8/2PK

Philips T12 fluorescent lamps provide high performance in a wide range of sizes, shapes, and types.

Product data

General Information	
Base	R17D [R17d (RDC)]
Life 3-Hr Start [Hrs]	12000 h
Features	ALTO® (ALTO)
Footnotes Fluorescent/CFL 1	Meets the National Energy Policy Act of 1992 exemption for outdoor or cold temperature applications only. (223)

Light Technical	
Color Code	33
Initial lumen (Nom)	8800 lm
Color Designation	Cool White (CW)
Design Mean Lumens	7650 lm
Correlated Color Temperature (Nom)	4100 K
Color Rendering Index (Nom)	62

Operating and Electrical	
Power (Rated) (Nom)	110 W

Mechanical and Housing	
Cap-Base Information	Green Base
Nominal Length (Inch)	96

Product Data	
Order product name	F96T12/CW/HO-O ALTO 8/2PK
EAN/UPC - Product	50046677205442
Order code	205443
Numerator - Quantity Per Pack	1
Numerator - Packs per outer box	8
Material Nr. (12NC)	927895203339
Net Weight (Piece)	680.000 g

Warnings and Safety

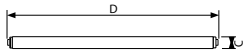
• Lamp contains mercury. Manage in Accord with Disposal Laws. See: www.lamprecycle.org or 1-800-555-0050

High Output T12

Dimensional drawing

Product

F96T12/CW/HO-O ALTO 8/2PK



T12 Revised Double Contact

F96T12 110W/33 HO ALTO

