

# MHN-TD 雙頭複金屬燈

## MHN-TD 70W/842 RX7s 1CT/12

雙端型石英複金屬燈

### 安全提示

- Use only in totally enclosed luminaire, even during testing (IEC61167, IEC 62035, IEC60598)
- The luminaire must be able to contain hot lamp parts if the lamp ruptures
- Control gear must include end-of-life protection (IEC61167, IEC 62035)
- A lamp breaking is extremely unlikely to have any impact on your health. If a lamp breaks, ventilate the room for 30 minutes and remove the parts, preferably with gloves. Put them in a sealed plastic bag and take it to your local waste facilities for recycling. Do not use a vacuum cleaner.

### 产品数据

一般資訊	
燈座基底	RX7s
操作位置	P45 [平行 +/-45D 或水平 (HOR)]
通量測量參考	Sphere
壽命 (故障率 50%) (標稱)	10,500 h
照明技術	
色碼	842 [CCT of 4200K]
光通量	5,800 lm
色彩名稱	冷白光 (CW)
色度坐標 X (標稱)	0.371
色度坐標 Y (Nom)	0.366
相關色彩溫度 (規範)	4200 K
流明功能 (額定) (最小)	67 lm/W
光效 (額定) (標準)	75 lm/W
演色性指數 (CRI)	75
電弧長 O (標稱)	7.7 mm

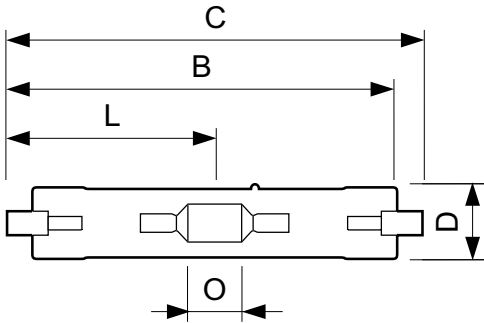
運轉與電力	
耗電量	77.0 W
電壓 (標稱)	90 V
電壓 (標稱)	90 V
控制與調光	
可調光	否
機械與外罩	
燈泡表層	透明
燈泡形狀	TD
認證與應用	
節能省電等級	G
汞 (Hg) 含量 (最大)	11 mg
汞 (Hg) 含量 (標稱)	11 mg
能源消耗 kWh/1000 h	77 kWh

# MHN-TD 雙頭複金屬燈

EPREL 註冊碼	473315
<b>產品資料</b>	
下訂產品名稱	MHN-TD 70W/842 RX7s 1CT/12
完整產品名稱	MHN-TD 70W/842 RX7s 1CT/12
完整產品代碼	871829121532500
訂單代碼	928070205190

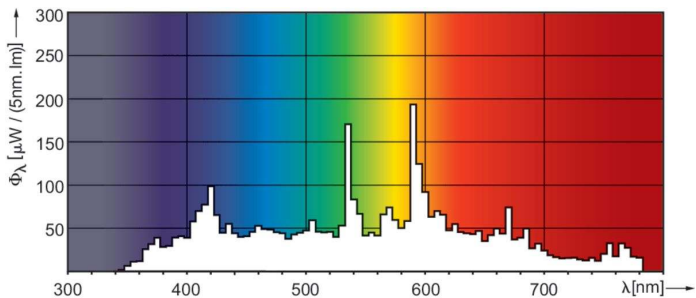
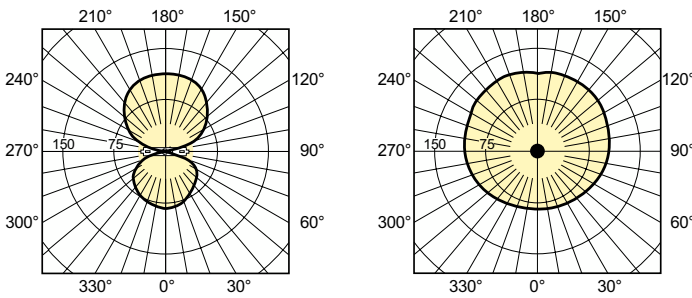
材質 Nr. (12NC)	928070205190
分子 - 每個包裝的數量	1
EAN/UPC - 產品/案例	8718291215325
分子 - 每一外盒包裝	12
EAN/UPC - 箱	8718291215332

## 二维绘图



Product	D (max)	D	O	C (max)
MHN-TD 70W/842 RX7s 1CT/12	19.5 mm	0.75 in	7.7 mm	117.6 mm

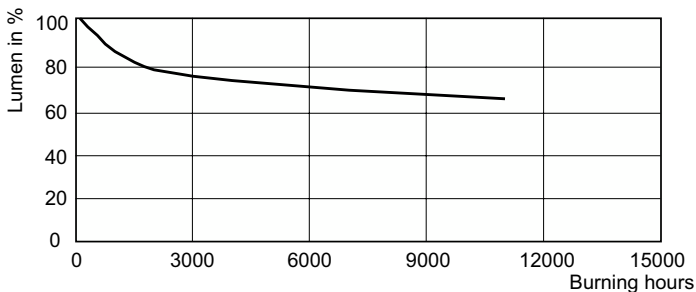
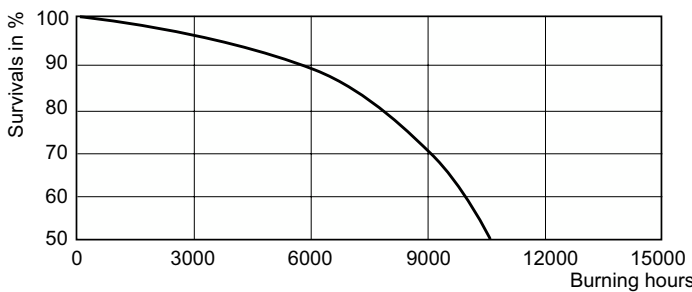
## 光度数据



Light Distribution Diagram - MHN-TD 70W/842 RX7s 1CT/12

Spectral Power Distribution Colour - MHN-TD 70W/842 RX7s 1CT/12

## 壽命



Life Expectancy Diagram - MHN-TD 70W/842 RX7s 1CT/12

Lumen Maintenance Diagram - MHN-TD 70W/842 RX7s 1CT/12

## MHN-TD 雙頭複金屬燈

