



MHN-TD

MHN-TD 150W/842 RX7s 1CT/12

Double-envelope, single- or double-ended Metal halide lamps

Warnings and Safety

- Use only in totally enclosed luminaire, even during testing (IEC61167, IEC 62035, IEC60598)
- Use only in totally enclosed luminaire, even during testing (IEC61167, IEC 62035, IEC60598)
- The luminaire must be able to contain hot lamp parts if the lamp ruptures
- The luminaire must be able to contain hot lamp parts if the lamp ruptures
- Control gear must include end-of-life protection (IEC61167, IEC 62035)
- Control gear must include end-of-life protection (IEC61167, IEC 62035)
- A lamp breaking is extremely unlikely to have any impact on your health. If a lamp breaks, ventilate the room for 30 minutes and remove the parts, preferably with gloves. Put them in a sealed plastic bag and take it to your local waste facilities for recycling. Do not use a vacuum cleaner.
- A lamp breaking is extremely unlikely to have any impact on your health. If a lamp breaks, ventilate the room for 30 minutes and remove the parts, preferably with gloves. Put them in a sealed plastic bag and take it to your local waste facilities for recycling. Do not use a vacuum cleaner.

Product data

General Information	
Cap-Base	RX7s
Operating Position	P45 [Parallel +/-45D or Horizontal(HOR)]
Flux measurement reference	Sphere
Life to 50% Failures (Nom)	10,500 hour(s)

Light Technical	
Color Code	842 [CCT of 4200K]
Luminous Flux	12,500 lm
Color Designation	Cool White (CW)
Chromaticity Coordinate X (Nom)	0.371
Chromaticity Coordinate Y (Nom)	0.366

Correlated Color Temperature (Nom)	4200 K
Luminous Efficacy (Rated) (Min)	73 lm/W
Luminous Efficacy (rated) (Nom)	81 lm/W
Color rendering index (CRI)	81
Arc Length O (Nom)	17.8 mm

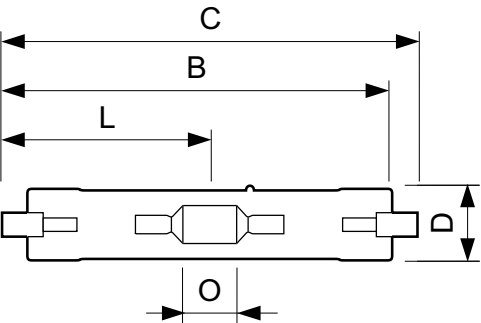
Operating and Electrical	
Power Consumption	155.0 W
Voltage (Nom)	98 V
Voltage (Nom)	98 V

MHN-TD

Controls and Dimming	
Dimmable	No
Mechanical and Housing	
Bulb Finish	Clear
Bulb Shape	TD
Approval and Application	
Energy Efficiency Class	G
Mercury (Hg) Content (Max)	12.3 mg
Mercury (Hg) Content (Nom)	12.3 mg
Energy Consumption kWh/1000 h	155 kWh
EPREL Registration Number	473320

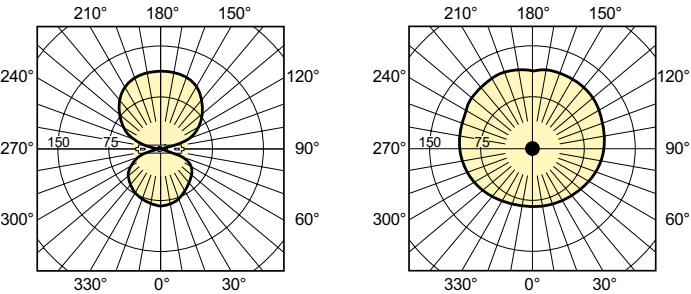
Product Data	
Order product name	MHN-TD 150W/842 RX7s 1CT/12
Full product name	MHN-TD 150W/842 RX7s 1CT/12
Full product code	871829121536300
Order code	928076505190
Material Nr. (12NC)	928076505190
Numerator - Quantity Per Pack	1
EAN/UPC - Product/Case	8718291215363
Numerator - Packs per outer box	12
EAN/UPC - Case	8718291215370

Dimensional drawing

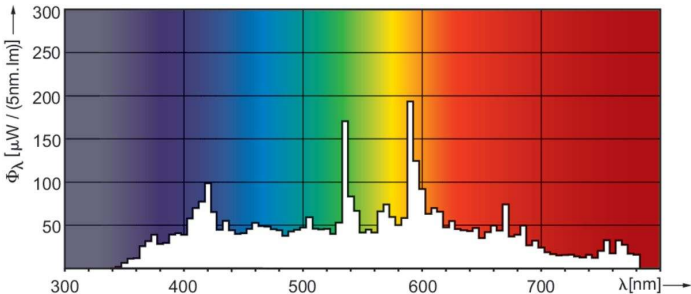


Product	D (max)	D	O	C (max)
MHN-TD 150W/842 RX7s 1CT/12	23.0 mm	0.89 inch	17.8 mm	135.4 mm

Photometric data

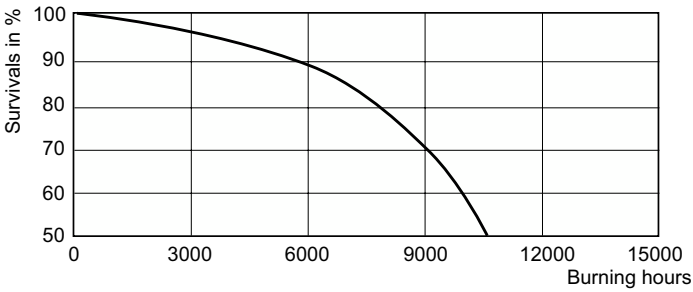


Light Distribution Diagram - MHN-TD 150W/842 RX7s 1CT/12

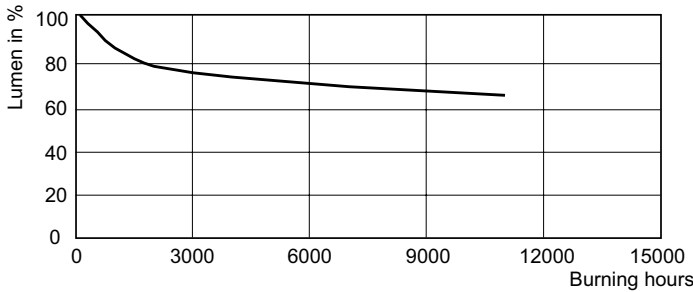


Spectral Power Distribution Colour - MHN-TD 150W/842 RX7s 1CT/12

Lifetime



Life Expectancy Diagram - MHN-TD 150W/842 RX7s 1CT/12



Lumen Maintenance Diagram - MHN-TD 150W/842 RX7s 1CT/12

