

MASTERCcolour CDM-TD

MASTERCcolour CDM-TD 70W/830 RX7S 1CT/12

Range of double-ended, compact, high-efficiency, discharge lamps with a stable color over lifetime and a crisp, sparkling light

Product data

General Information		Operating and Electrical	
Cap base	RX7S [RX7s]	Luminous efficacy (rated) (nom.)	85 lm/W
Operating position	P45 [Parallel +/-45D or Horizontal(HOR)]	Color rendering index (min.)	77
Life to 5% failures (nom.)	9000 h	Color rendering index (nom.)	80
Life to 10% failures (nom.)	13000 h		
Life to 20% failures (nom.)	15000 h		
Life to 50% failures (nom.)	16000 h		
ANSI code HID	C139/E		
Light Technical			
Colour code	830 [CCT of 3,000 K]	Power (Rated) (Nom)	71.0 W
Luminous flux (nom.)	6000 lm	Lamp current run-up (max.)	1.4 A
Luminous flux (rated) (nom.)	6000 lm	Lamp current (EM) (nom.)	0.95 A
Colour designation	Warm White (WW)	Ignition supply voltage (max.)	198 V
Lumen maintenance 10,000 hours (nom.)	70 %	Ignition peak voltage (max.)	5000 V
Lumen maintenance 2,000 hours (min.)	80 %	Ignition supply voltage (min.)	198 V
Lumen maintenance 2,000 hours (nom.)	85 %	Re-ignition time (min.) (max.)	15 min
Lumen maintenance 5,000 hours (min.)	70 %	Ignition time (max.)	30 s
Lumen maintenance 5,000 hours (nom.)	80 %	Voltage (Max)	102 V
Chromaticity coordinate X (nom.)	0.443	Voltage (Min)	86 V
Chromaticity coordinate Y (nom.)	0.401	Voltage (Nom)	94 V
Correlated colour temperature (nom.)	3000 K		
		Controls and Dimming	
		Dimmable	No
		Run-up time 90% (max.)	3 min

MASTERCcolour CDM-TD

Mechanical and Housing

Bulb finish	Clear
-------------	-------

Approval and Application

Energy efficiency label (EEL)	A
Mercury (Hg) content (nom.)	3.4 mg
Energy Consumption kWh/1000 h	78 kWh

UV

PET (NIOSH) (min.)	8 h/500lx
Damage factor D/fc (max.)	0.3

Luminaire Design Requirements

Bulb temperature (max.)	500 °C
Pinch temperature (max.)	280 °C

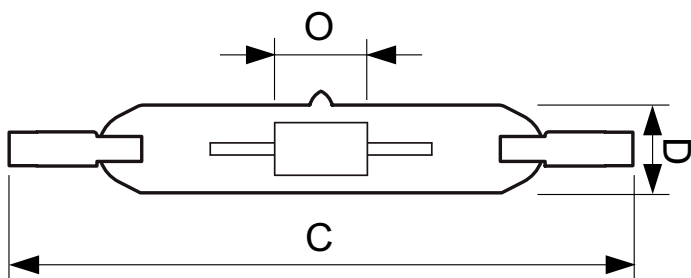
Product Data

Full product code	871150019782515
Order product name	MASTERCcolour CDM-TD 70W/830 RX7s 1CT/12
EAN/UPC – product	8711500197825
Order code	19782515
Numerator – quantity per pack	1
Numerator – packs per outer box	12
Material no. (I2NC)	928082205125
Net weight (piece)	21.000 g
ILCOS Code	MD/UB-70/830-H-RX7s-22/117.6

Warnings and Safety

- Use only in totally enclosed luminaire, even during testing (IEC61167, IEC 62035, IEC60598)
- The luminaire must be able to contain hot lamp parts if the lamp ruptures
- Lamps may use electronic or electromagnetic control gear
- Control gear must include end-of-life protection (IEC61167, IEC 62035)
- A lamp breaking is extremely unlikely to have any impact on your health. If a lamp breaks, ventilate the room for 30 minutes and remove the parts, preferably with gloves. Put them in a sealed plastic bag and take it to your local waste facilities for recycling. Do not use a vacuum cleaner.

Dimensional drawing

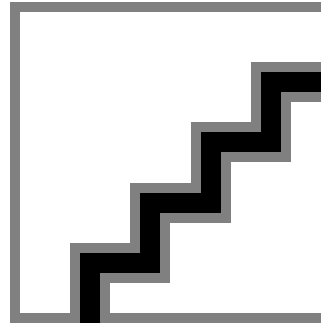
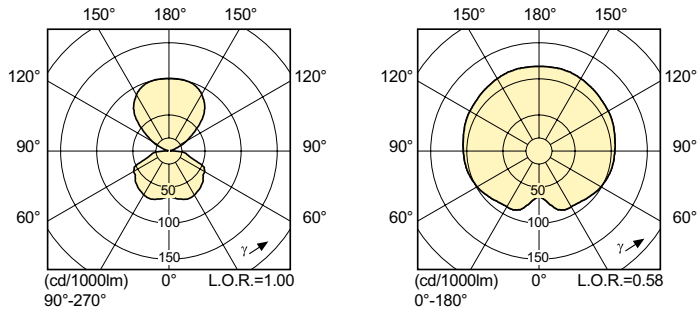


Product	D (max)	D	O	C (max)
MASTERCcolour CDM-TD 70W/830 RX7s 1CT/12	22 mm	0.75 in	8 mm	119.63 mm

CDM-TD 70W/830 RX7s

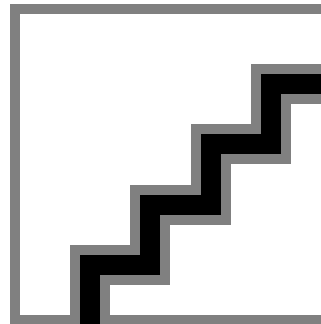
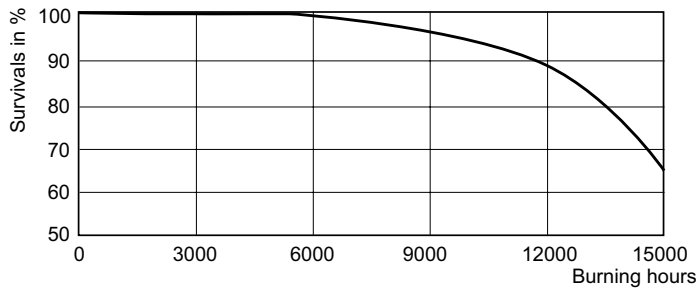
MASTERCoulour CDM-TD

Photometric data



LDPO_CDM-TD_830-Spectral power distribution Colour

Lifetime



LDLM_CDM-TD_0001-Lumen maintenance diagram

