



MASTERCcolour CDM-TC



MASTERCcolour CDM-TC 70W/830 G8.5 1CT/12

Range of single-ended, very compact, high-efficiency, discharge lamps with a stable color over lifetime and a crisp, sparkling light

Warnings and Safety

- Use only in totally enclosed luminaire, even during testing (IEC61167, IEC 62035, IEC60598)
- The luminaire must be able to contain hot lamp parts if the lamp ruptures
- Control gear must include end-of-life protection (IEC61167, IEC 62035)
- Use only with electronic control gear. 35W/830 lamps may also use electromagnetic gear.
- A lamp breaking is extremely unlikely to have any impact on your health. If a lamp breaks, ventilate the room for 30 minutes and remove the parts, preferably with gloves. Put them in a sealed plastic bag and take it to your local waste facilities for recycling. Do not use a vacuum cleaner.

Product data

General information		Color Designation	
Cap-Base	G8.5 [G8.5]	Warm White (WW)	
Operating Position	UNIVERSAL [Any or Universal (U)]	Lumen Maintenance 10000 h (Nom)	65 %
Life to 5% Failures (Nom)	9000 h	Lumen Maintenance 2000 h (Min)	75 %
Life To 10% Failures (Nom)	8000 h	Lumen Maintenance 2000 h (Nom)	85 %
Life to 20% Failures (Nom)	9000 h	Lumen Maintenance 5000 h (Min)	65 %
Life to 50% Failures (Nom)	12000 h	Lumen Maintenance 5000 h (Nom)	75 %
ANSI Code HID	C139/E	Chromaticity Coordinate X (Nom)	0.434
Flux measurement reference	Sphere	Chromaticity Coordinate Y (Nom)	0.398
Light technical		Correlated Color Temperature (Nom)	3000 K
Color Code	830 [CCT of 3000K]	Luminous Efficacy (rated) (Nom)	86 lm/W
Luminous Flux (Nom)	6300 lm	Color Rendering Index (Nom)	83
Luminous Flux (Rated) (Nom)	6300 lm	Operating and electrical	
		Power (Nom)	73.2 W

MASTERCcolour CDM-TC

Lamp Current Run-Up (Max)	1.4 A
Ignition Supply Voltage (Max)	198 V
Ignition Peak Voltage (Max)	5000 V
Ignition Supply Voltage (Min)	198 V
Ignition Peak Voltage (Min)	3500 V
Re-Ignition Time (Min) (Max)	15 min
Ignition Time (Max)	30 s
Voltage (Max)	87 V
Voltage (Min)	78 V
Voltage (Nom)	83 V

Controls and dimming

Dimmable	No
Run-Up Time 90% (Max)	3 min

Mechanical and housing

Bulb Finish	Clear
Bulb Material	UV-Block Quartz
Bulb Shape	T14 [T 14 mm]

Approval and application

Energy Efficiency Class	G
Mercury (Hg) Content (Max)	4.6 mg
Mercury (Hg) Content (Nom)	4.6 mg
Energy Consumption kWh/1000 h	74 kWh

EPREL Registration Number	473344
---------------------------	--------

UV

Pet (Niosh) (Min)	8 h/500lx
Damage Factor D/fc (Max)	0.3

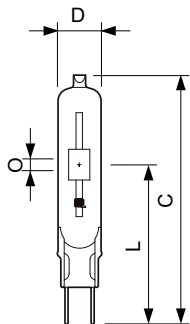
Luminaire design requirements

Bulb Temperature (Max)	550 °C
Pinch Temperature (Max)	300 °C
Pinch Temperature (Max)-DUP(do not use)	300 °C

Product data

Full product code	871150020167615
Order product name	MASTERCcolour CDM-TC 70W/830 G8.5 1CT/12
EAN/UPC - Product	8711500201676
Order code	928086505131
Numerator - Quantity Per Pack	1
Local code description	8348275
Numerator - Packs per outer box	12
Material Nr. (12NC)	928086505131
Net Weight (Piece)	0.010 kg
ILCOS Code	MT/UB-70/830-H-G8.5-17/85

Dimensional drawing

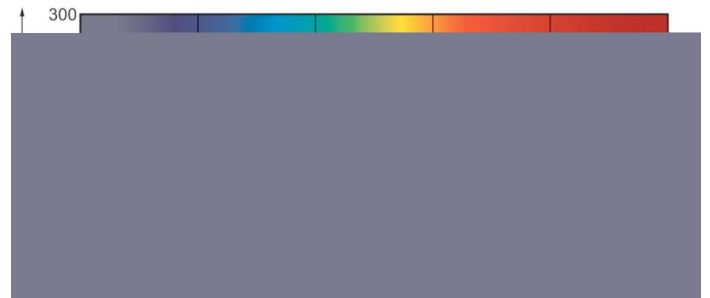
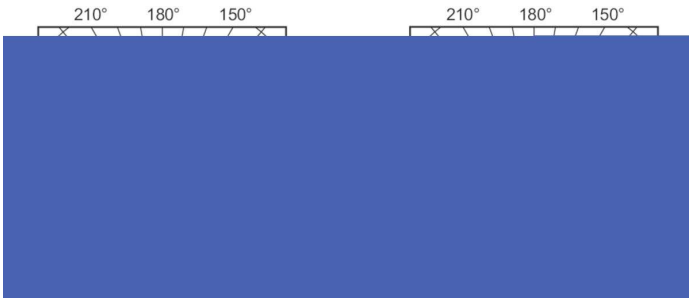


MASTERCcolour CDM-TC 70W/830 G8.5 1CT/12

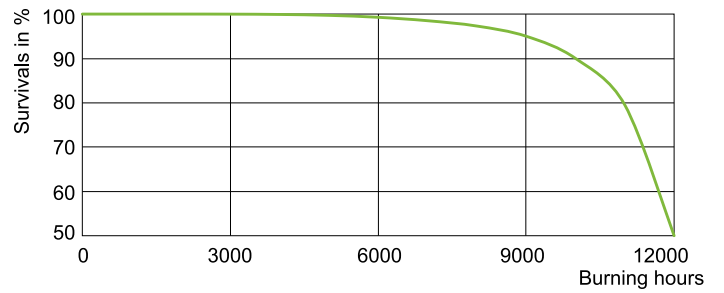
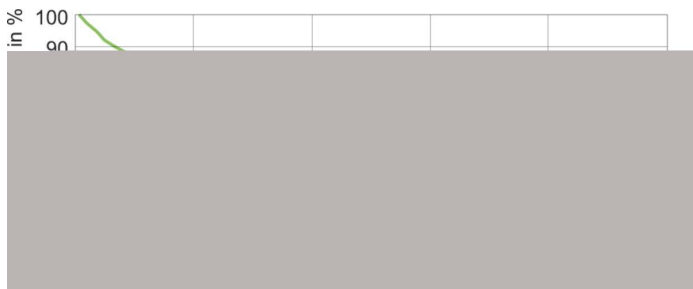
Product	D (max)	D	O	L (min)	L (max)	L	C (max)
MASTERCcolour CDM-TC 70W/830 G8.5 1CT/12	15 mm	0.5 in	7 mm	51 mm	53 mm	52 mm	85 mm

MASTERCcolour CDM-TC

Photometric data



Lifetime



LDLE_CDM-TC_0001-Life expectancy diagram

