



# Barco digital cinema projectors

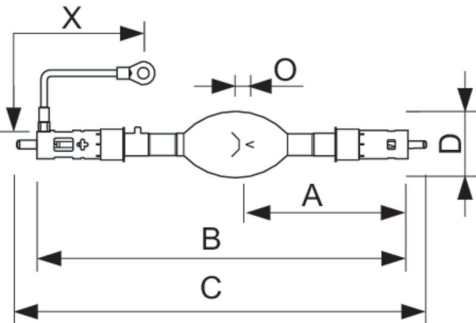
## XDC 6500 B

Digital Xenon Cinema B-type lamps are ideal for today's demanding 3D and 2D digital cinema presentations. They are especially designed for Barco projectors. There is a choice of three power ratings in the B-type Digital Xenon Cinema lamps range: 3000W, 4000W, or 6500W. There is also a choice of three power ratings in the BH-type Digital Helios lamps: 2000W, 3000W, and 4200W power ratings. All these lamps produce the very high light output needed to maximize screen brightness and enhance the dramatic effect for the viewer. These long-life digital lamps also provide constant color temperature characteristics, and meet all of the stringent arc-stability requirements for consistent customer satisfaction. In addition to B-type Digital Cinema Xenon lamps there are C-, N-, S-, and TA-type Digital Cinema Xenon lamps. These are all individually customized per projector, so there is a different, perfect-fitting lamp for each projector model to ensure optimized projector performance.

### Product data

General Information		Full product name	
Operating Position	P15 [Parallel +/-15D or Horizontal(HOR)]	Full product code	XDC 6500 B
Nominal lifetime	500 h	Order code	872790085636100
Operating and Electrical		Material Nr. (12NC)	928415006301
Power Consumption	6,500 W	Numerator - Quantity Per Pack	1
Lamp Current (Nom)	170 A	EAN/UPC - Product/Case	8727900856361
Voltage (Nom)	38 V	Numerator - Packs per outer box	1
Voltage (Nom)	38 V	EAN/UPC - Case	8727900856361
Product Data			
Order product name	XDC 6500 B		

Dimensional drawing



Product	O	D	X	B (max)	C (max)	A
XDC 6500 B	7.5 mm	70 mm	152 mm	391 mm	433 mm	170.5 mm

