



Christie digital cinema projectors

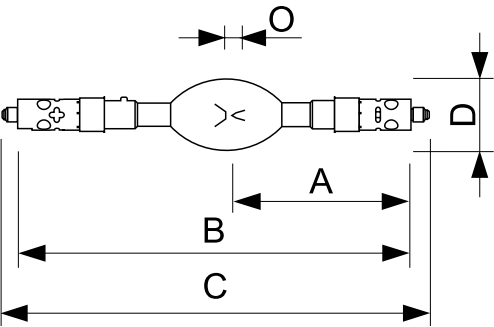
XDC 6000 C

Digital Xenon Cinema C-type lamps are ideal for today's demanding 3D and 2D digital cinema presentations. They are especially designed for Christie projectors. There is a choice of four power ratings in the C-type Digital Cinema Xenon lamps range: 2000W, 3000W, 4500W, or 6000W. There is also a choice of three power ratings in the CH-type Digital Helios lamps range: 2000W, 3000W, and 4200W power ratings. All these lamps produce the very high light output needed to maximize screen brightness and enhance the dramatic effect for the viewer. These long-life digital lamps also provide constant color temperature characteristics, and meet all of the stringent arc-stability requirements for consistent customer satisfaction. In addition to C-type Digital Cinema Xenon lamps there are B-, N-, S-, and TA-type Digital Cinema Xenon lamps. These are all individually customized per projector, so there is a different, perfect-fitting lamp for each projector model to ensure optimized projector performance.

Product data

General Information			
Operating Position	P20 [Parallel +/-20D or Horizontal(HOR)]	Full product name	XDC 6000 C
Nominal lifetime	600 h	Full product code	872790030235600
Operating and Electrical		Order code	928416706201
Power Consumption	6,000 W	Material Nr. (12NC)	928416706201
Lamp Current (Nom)	155 A	Local order code	XDC6000C
Voltage (Nom)	40 V	Numerator - Quantity Per Pack	1
Voltage (Nom)	40 V	EAN/UPC - Product/Case	8727900302356
Product Data		Numerator - Packs per outer box	1
Order product name	XDC 6000 C	EAN/UPC - Case	8727900302356

Dimensional drawing



Product	O	D	B (max)	C (max)	A
XDC 6000 C	8.0 mm	70 mm	381 mm	417 mm	165.5 mm

